



Layout Editor

Users Guide

Copyright © 2003-2008 Ken Stahlman. All Rights Reserved.

www.ksoft.net

ken@ksoft.net

FontCat Layout Editor Copyright © 1997 - 2008 Ken Stahlman. All Rights Reserved.

FontCat uses software developed by the following:

Sparkle framework Copyright (c) 2006 Andy Matuschak

Thanks to Brent Simmons, whose RSS reader class was modified and used for appcast support. His class is licensed as follows:

Copyright (c) 2002, Brent Simmons

All rights reserved.

Neither the name of ranchero.com or Brent Simmons nor the names of its contributors may be used to endorse or promote products derived from this software without specific prior written permission.

THIS SOFTWARE IS PROVIDED BY THE COPYRIGHT HOLDERS AND CONTRIBUTORS "AS IS" AND ANY EXPRESS OR IMPLIED WARRANTIES, INCLUDING, BUT NOT LIMITED TO, THE IMPLIED WARRANTIES OF MERCHANTABILITY AND FITNESS FOR A PARTICULAR PURPOSE ARE DISCLAIMED. IN NO EVENT SHALL THE COPYRIGHT OWNER OR CONTRIBUTORS BE LIABLE FOR ANY DIRECT, INDIRECT, INCIDENTAL, SPECIAL, EXEMPLARY, OR CONSEQUENTIAL DAMAGES (INCLUDING, BUT NOT LIMITED TO, PROCUREMENT OF SUBSTITUTE GOODS OR SERVICES; LOSS OF USE, DATA, OR PROFITS; OR BUSINESS INTERRUPTION) HOWEVER CAUSED AND ON ANY THEORY OF LIABILITY, WHETHER IN CONTRACT, STRICT LIABILITY, OR TORT (INCLUDING NEGLIGENCE OR OTHERWISE) ARISING IN ANY WAY OUT OF THE USE OF THIS SOFTWARE, EVEN IF ADVISED OF THE POSSIBILITY OF SUCH DAMAGE.

Omni frameworks software developed by The Omni Group and

Omni Source Code software is available from The Omni Group on their web site at www.omnigroup.com.

Contents

Layouts	3
Main Screen	3
The Tool Palette	4
The Fields	7
Font Name List Field	7
Font List with Alphabet Field	8
Font List with Alphabet Field Bordered	9
Font List with Alphabet Field Decorative.....	10
Font List with Text Block	11
Font List with Text Block Bordered	12
Font List Single Line with Alphabet.....	13
Font List Single Line with Text Block.....	14
Text List	15
Font Name	16
Font Name With Alphabet	17
Alphabet.....	18
Alphabet All Characters.....	19
Waterfall.....	20
Sizes.....	21
Font Size and Sample	22
Grid.....	23
Page Number	24
Path	25
Information	26
Font Types.....	27
Image	28
Text	29
Shapes.....	30

IN THIS CHAPTER

- What are Layouts
- Layout Fields
- Field Properties
- Example Layouts

Layouts

Layouts are files that can be used in printing your font listings to control the appearance and content of the printout. In the layout editor there are various fields that you will use to control what gets displayed.

In a layout there are several categories of fields you can use.

Shape and other non font listing - this type of field is for adding lines, shapes and images to your layout. In addition you can add page numbers, and a folder reference..

Font Listing - selected face - these fields will print only using the currently selected face from the font listing. These fields can be used to buildup a custom font sample page showing a single face. Some of the fields can display the name of the font, text or an alphabet.

Font Listing - all faces - these fields are used to print out the entire list of fonts. If you have more than 1 of these fields in a layout, only the first one will control the breaks between pages.

The Main Screen

The screen shot below (Figure 1) shows the main screen when you start up the layout editor. It has three main sections to it.

The tool palette.

The layout window.

The inspectors

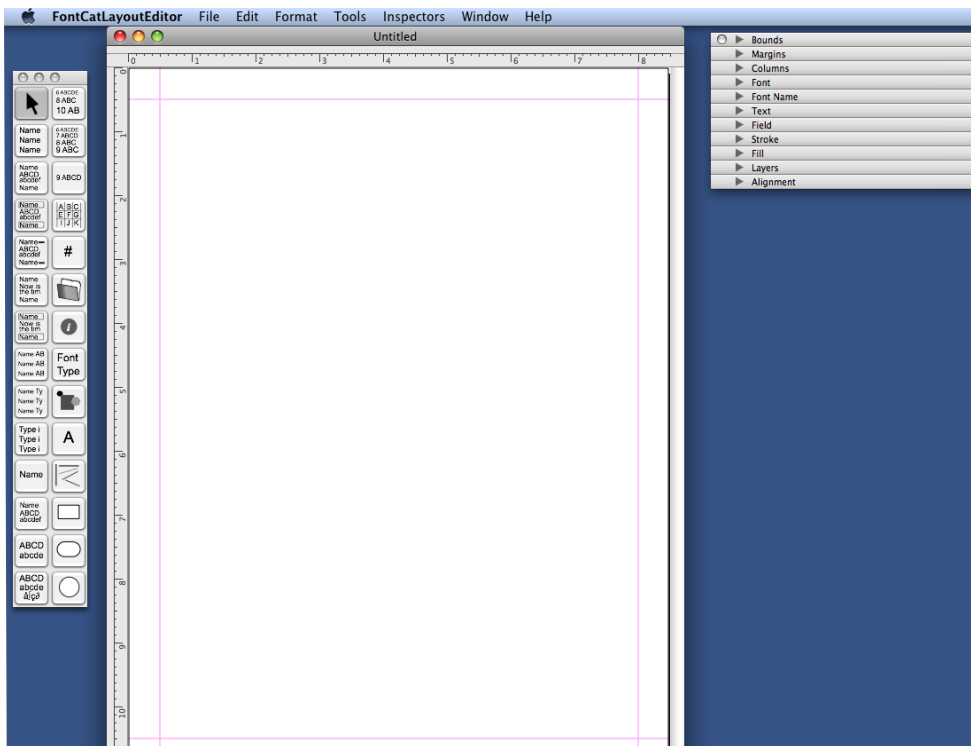


Figure 1-1 Layout Editor main screen

The tool palette

The tool palette consists of the following tools:

The fields available are as follows: *(left side, top to bottom)*

Selection tool - select a field, or hold the mouse down as you drag over fields selecting each one that completely is inside the selection.

Font Listing - print out a listing of all font names for the currently selected font set.

Font Listing With Alphabet - print out a listing of all font names with alphabet for the currently selected font set.

Font Listing With Alphabet Bordered - print out a listing of all font names with alphabet for the currently selected font set with a border around the font name

Font Listing With Alphabet Decorative - print out a listing of all font names with alphabet for the currently selected font set with some decorative lines.

Font Listing with Text Blocks - print out a listing of all font names with text blocks for the currently selected font set.

Font Listing with Text Blocks Bordered - print out a listing of all font names with text blocks for the currently selected font set with a border around the font name.

Font Listing with Alphabet Single Line - print out a listing of all font names with alphabet for the currently selected font set with the alphabet on the same line as the font name, but in a second column.

Font Listing with Text Single Line - print out a listing of all font names with text for the currently selected

font set with the alphabet on the same line as the font name, but in a second column.

Font Listing with Alphabet Single Line - print out a listing of all font names with alphabet for the currently selected font set with the alphabet on the same line as the font name, but in a second column.

Font Listing With Text Block - print out a listing of all font names with a text block for the currently selected font set.

Font Listing With Text Block Bordered - print out a listing of all font names with a text block for the currently selected font set with a border around the font name

Font Name With Alphabet - print out a single font with name and alphabet section

Alphabet - print out a single fonts alphabet section

Alphabet - print out a single fonts alphabet section and other characters in the font created with the option key.

(right side, top to bottom)

Waterfall - print out a single fonts sample in a waterfall style where each line shows a bigger standard font size.

Font Sizes - print out a single fonts sample in a waterfall style where each line shows a bigger size that the user selects the beginning and ending size with each line 1 point larger than the previous.

Size And Sample - print out a single fonts sample with a font and size and sample line. Can be used to construct a custom waterfall style display.

Char Grid - print out a single fonts sample in a grid. You can choose the starting character.

Page Number (# sign) - place one of these on each layout that you want to be sequentially numbered.

Folder - this will print the full pathname where your selected fonts are located.

Font Info - this will print the currently selected fonts information.

Font Type - this will print the currently selected fonts type.

Image - Use this field to import image files of logos or artwork.

Text Tool (T) - use this field to place any text you type in on your layout. You can set the font, size, alignment, leading and style for this text.

Line - draws a line at any angle, horizontally or vertically.

Rectangle - use this field to draw rectangles either filled or unfilled.

Round Rectangle - use this field to draw round rectangles either filled or unfilled.

Oval - use this field to draw ovals either filled or unfilled.

Font Name List Field

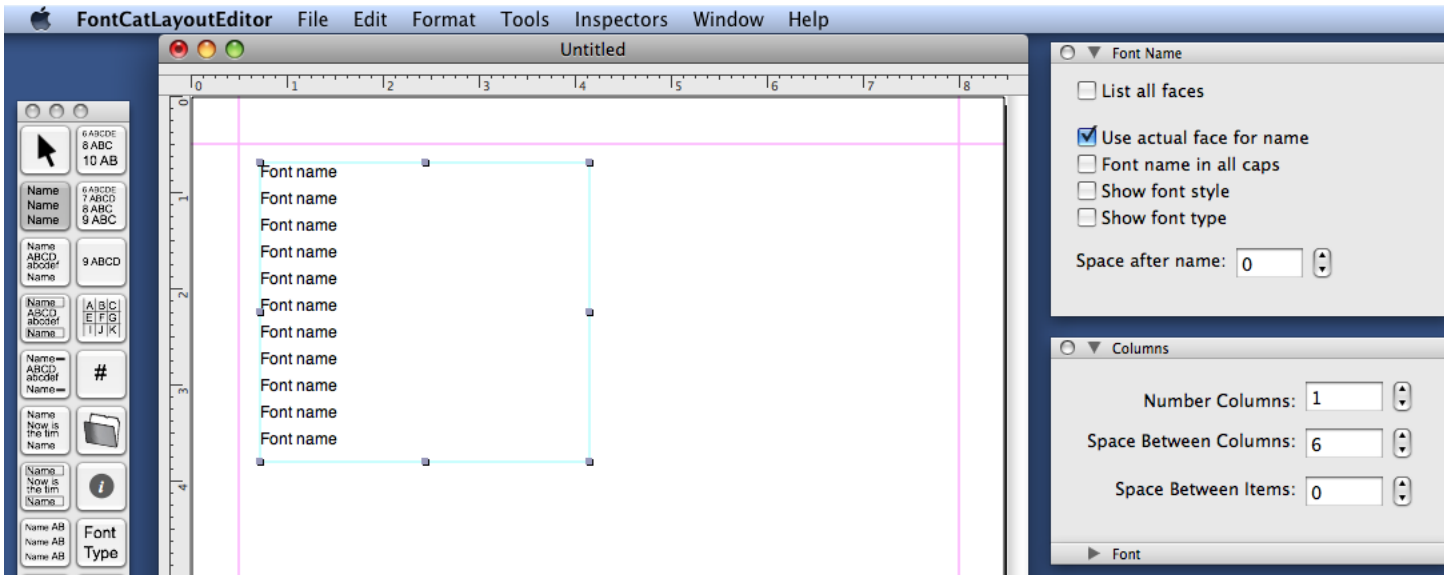


Figure 1-2 Layout Editor main screen showing Font Name List field and Font Name inspector.

The Font Name List field is used to produce a font listing of all selected fonts. Each font will be listed on a single line. If the *List all faces checkbox* is selected, then every font will also list every face contained in that font.

The Font Name inspector show in the upper right corner shows the options available for this field:

Use actual face for name - if this is checked, then each font will be listed in its actual face, as opposed to a single font.

Font name in all caps - if this is checked, the font name will be shown in ALL CAPS.

Show font style - if this is checked, the style of the font will be shown next to the font name.

Show font type - if this is checked, the type of font, TrueType, Postscript will be shown.

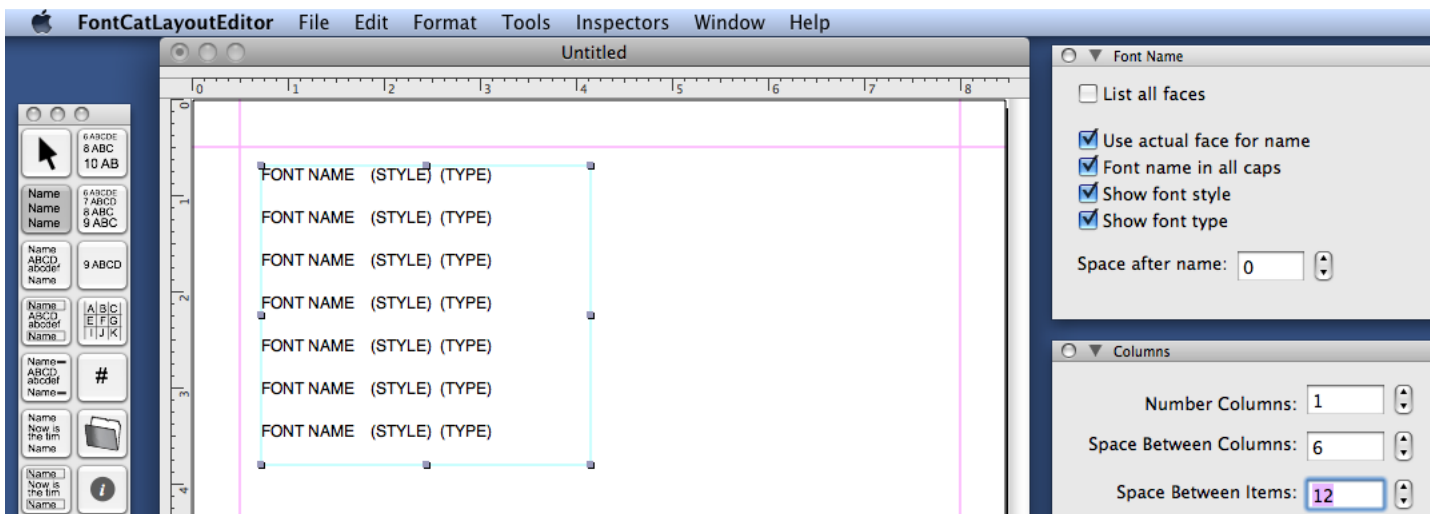


Figure 1-3 Layout Editor main screen showing Font Name List field and Font Name inspector with options selected

Font List with Alphabet Field

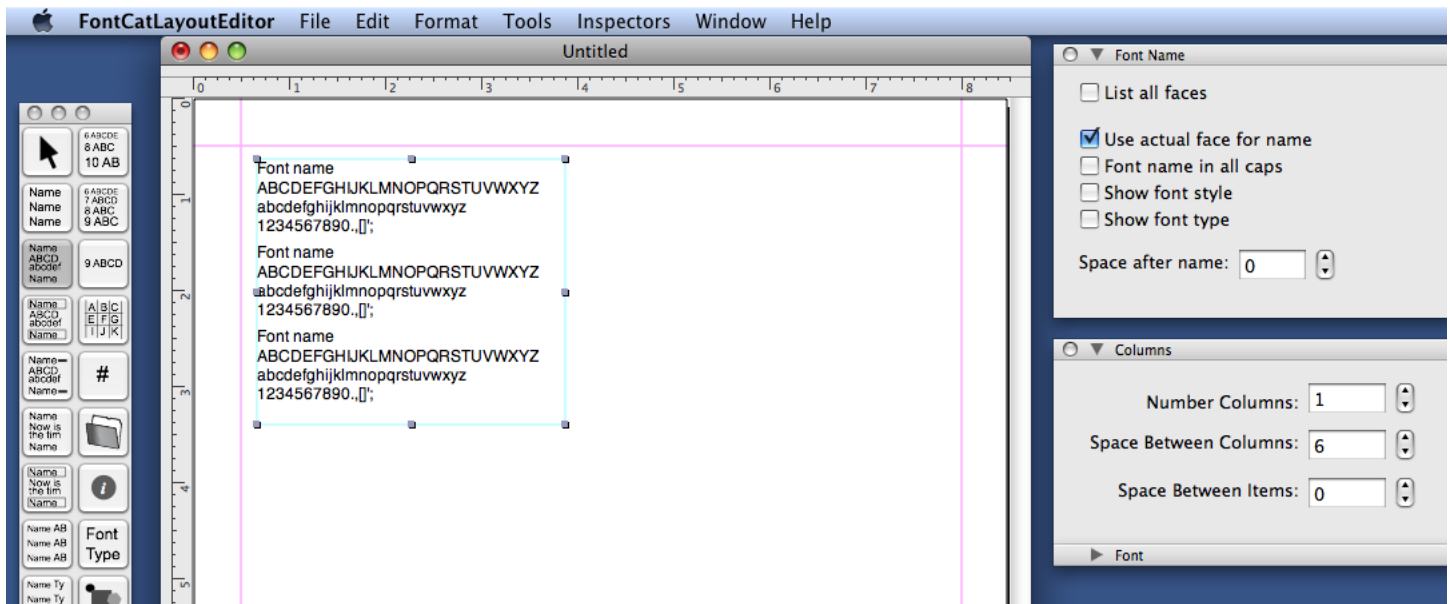


Figure 1-4 Layout Editor main screen showing Font List with Alphabet field

The Font List with Alphabet field is used to produce a font listing of all selected fonts with the alphabet or other user defined text.

The Font Name inspector shown in the upper right corner shows the options available for this field:

Use actual face for name - if this is checked, then each font will be listed in its actual face, as opposed to a single font.

Font name in all caps - if this is checked, the font name will be shown in ALL CAPS.

Show font style - if this is checked, the style of the font will be shown next to the font name.

Show font type - if this is checked, the type of font, TrueType, Postscript will be shown.

Text inspector- This inspector can be used to change the characters displayed in the alphabet section, along with the justification, size and color of the alphabet section.

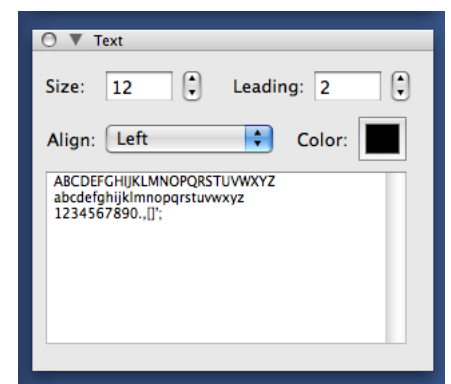


Figure 1-5 Layout Editor showing the Text field inspector.

Font List with Alphabet Field Bordered

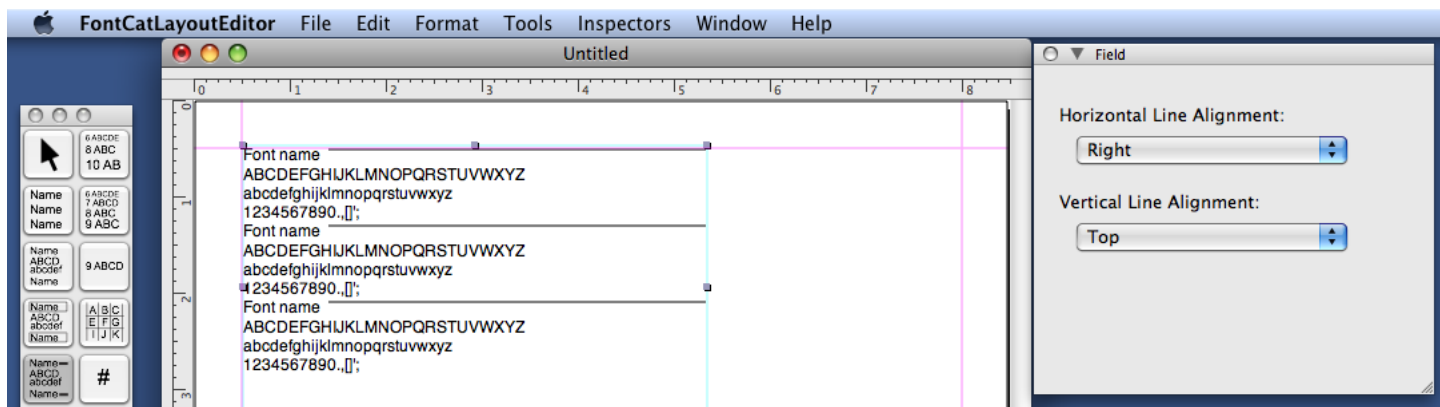


Figure 1-6 Font List with Alphabet Field Decorative

The Font List with Alphabet Decorative field is like the previous Font List with Alphabet field, but adds the option to put a decorative line near the name.

Field inspector- The field inspector shows the additional options available to control the appearance of the decorative line near the font name.

All other inspectors are the same as for the font list with alphabet field.

Font List with Alphabet Field Decorative

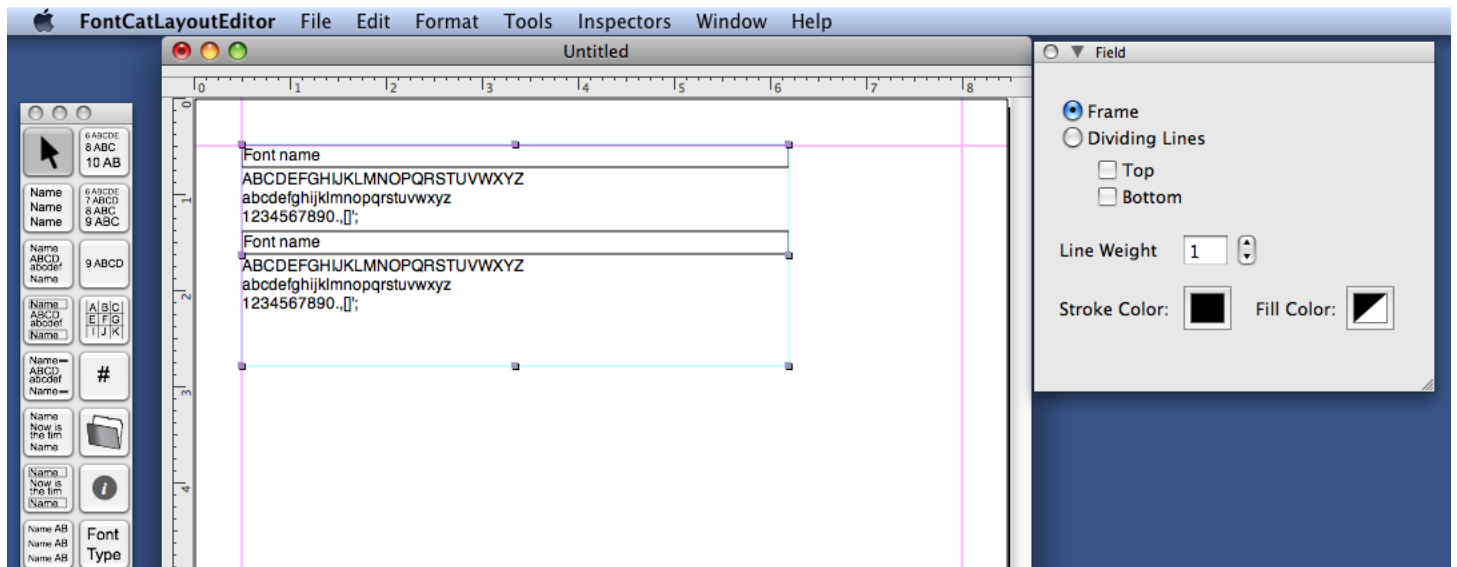


Figure 1-7 Font List with Alphabet Field Bordered

The Font List with Alphabet Bordered field is like the previous Font List with Alphabet field, but adds the option to put a border around the font name.

Field inspector- The field inspector shows the additional options available to control the appearance of the border around the font name.

All other inspectors are the same as for the font list with alphabet field.

Font List with Text Block

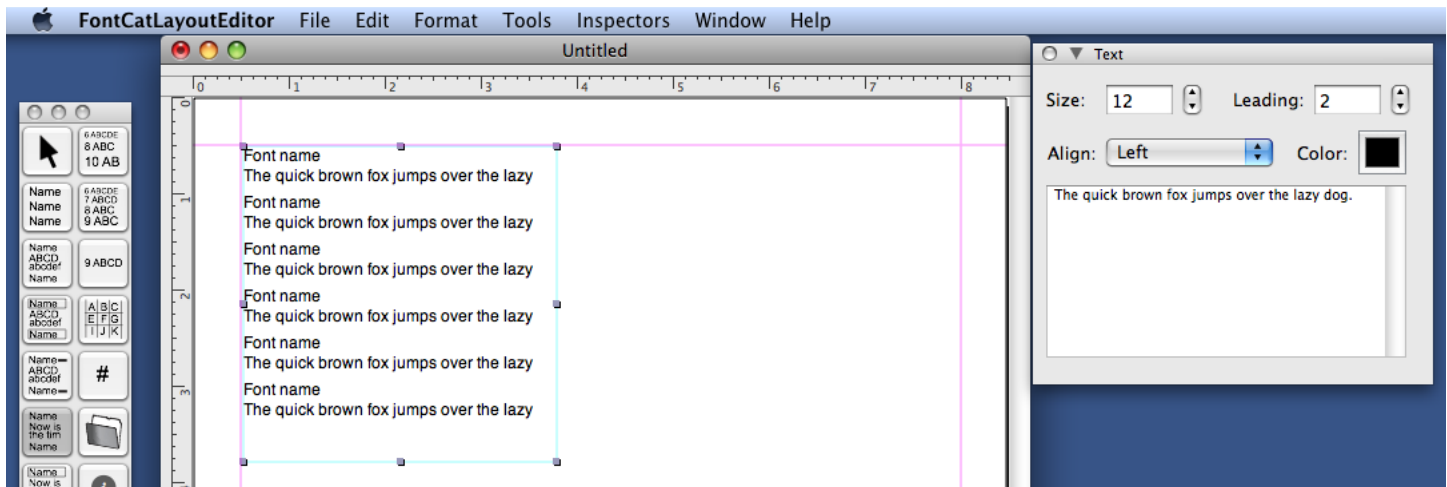


Figure 1-8 Font List with Text Block

The Font List with Text Block field is like the previous Font List with Alphabet field, but instead of an alphabet, it adds a small block of user defined text.

Text inspector- The text inspector is where you can change the default text that is displayed, as well as the size, justification and color of the text.

All other inspectors are the same as for the font list with alphabet field.

Font List with Text Block Bordered

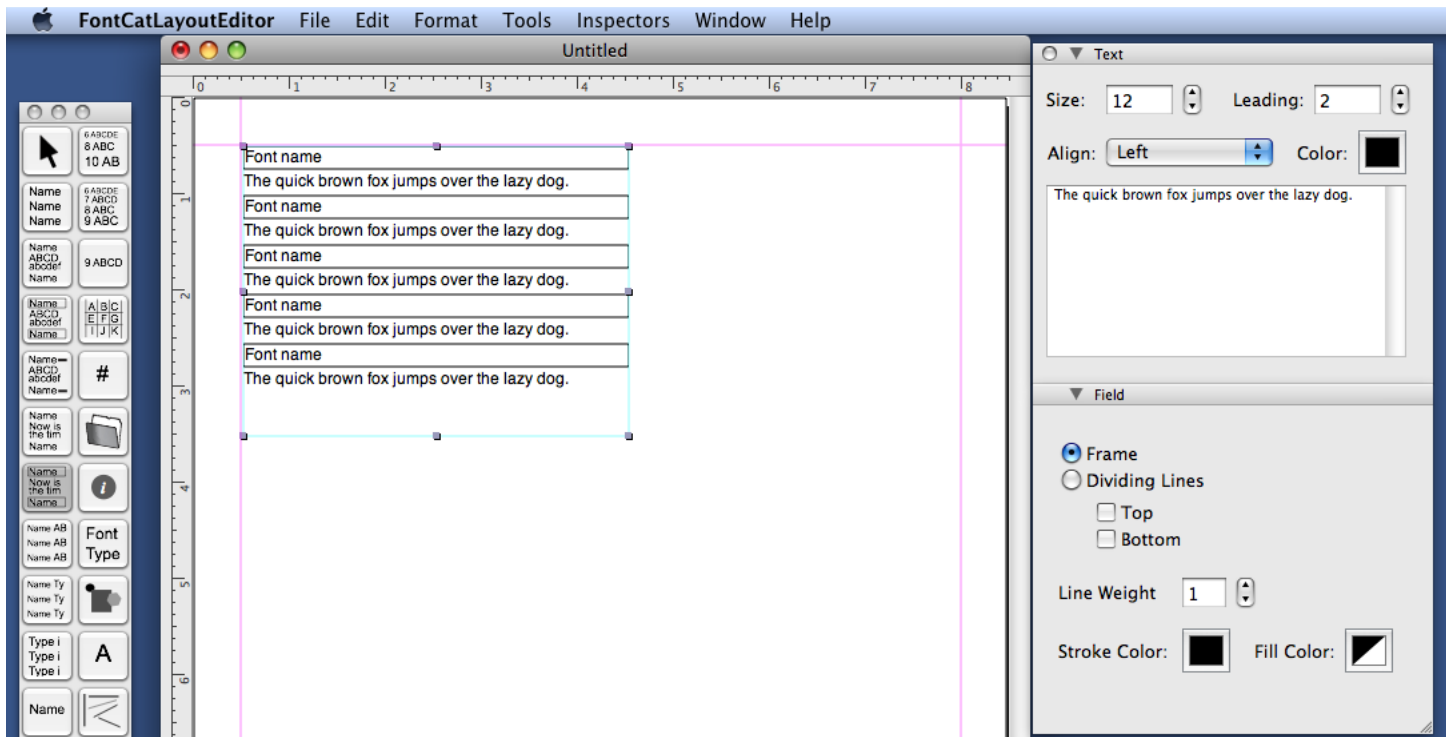


Figure 1-9 Font List with Text Block Bordered

The Font List with Text Block Bordered field is like the previous Font List with Alphabet Bordered field, but instead of an alphabet, it adds a small block of user defined text.

Font List Single Line with Alphabet

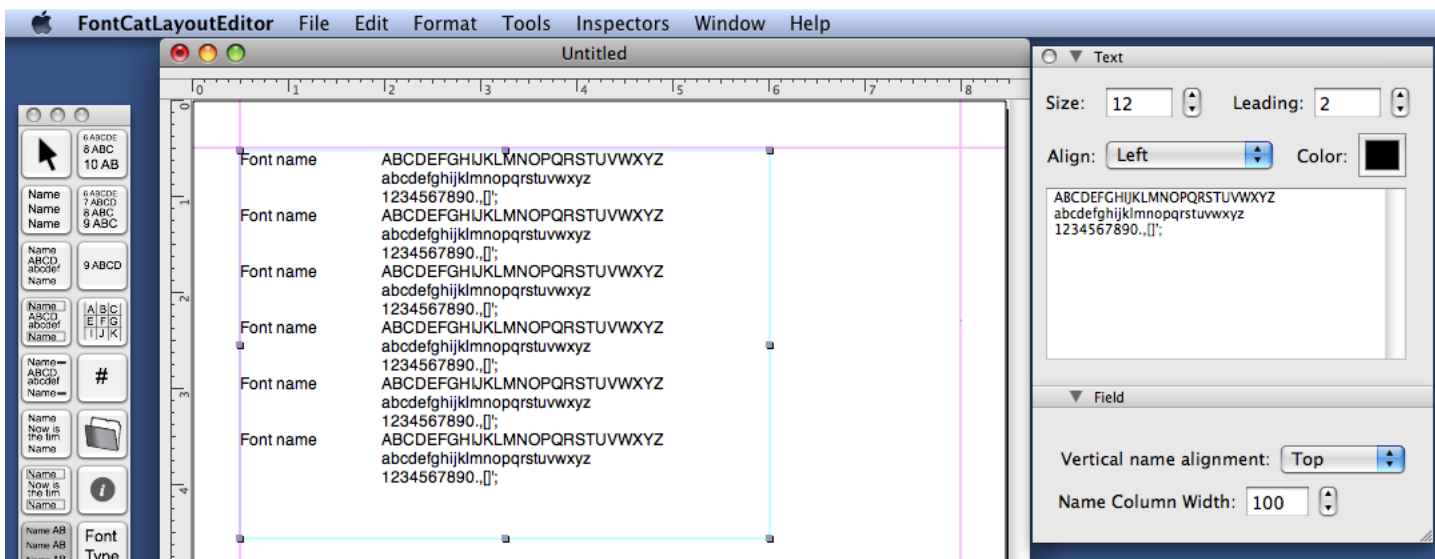


Figure 1-10 Font List Single Line with Alphabet

The Font List Single Line with Alphabet will display the name of the font to the left of a section that displays the alphabet.

The field inspector shows the options that are available for this field.

Vertical name alignment - Controls the vertical alignment of the text in relation to the displayed alphabet.

Name Column Width - The width of the name column.

Font List Single Line with Text Block

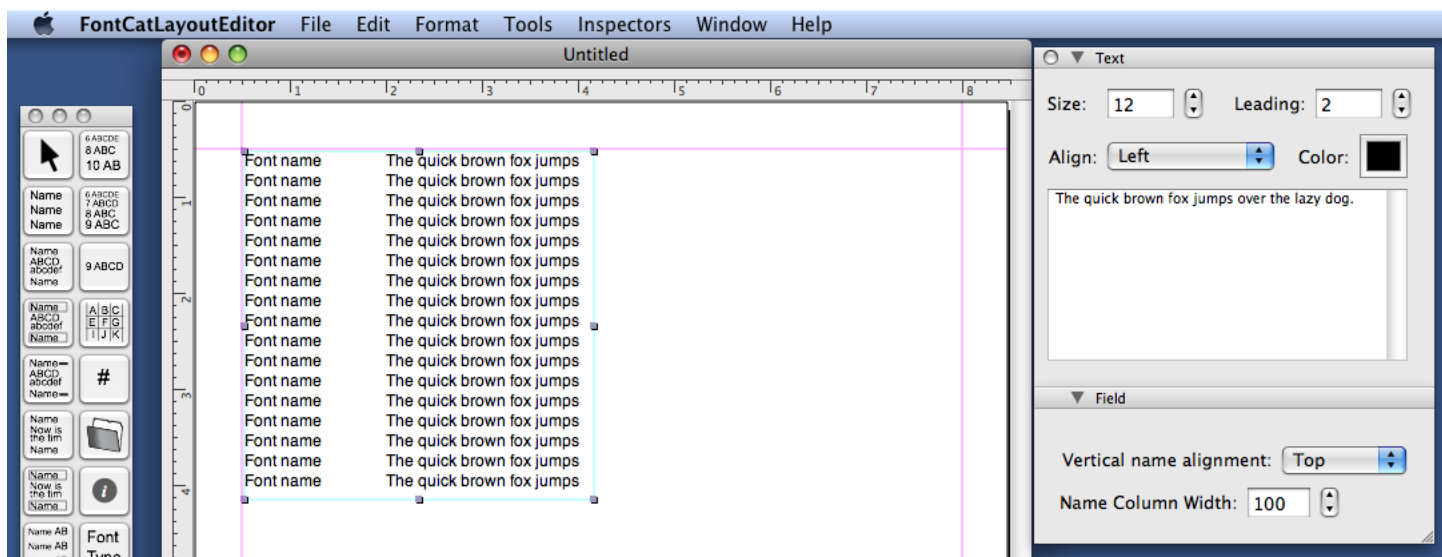


Figure 1-11 Font List Single Line with Text Block

The Font List Single Line with Text Block will display the name of the font to the left of a section that displays the text block.

The field inspector shows the options that are available for this field.

Vertical name alignment - Controls the vertical alignment of the text in relation to the displayed alphabet.

Name Column Width - The width of the name column.

Text List

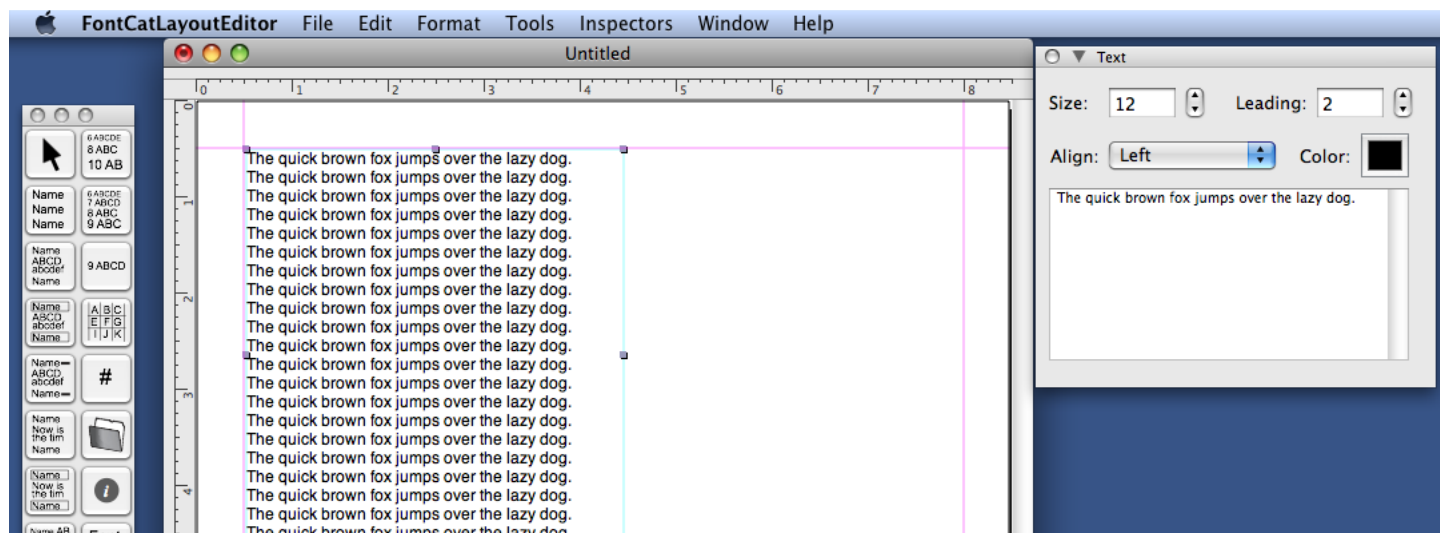


Figure 1-12 Text List

The Text List field is like the font name list field in that it will show a sample of each font. However, unlike the font name field, this field allows you to choose the text that is listed.

Font Name

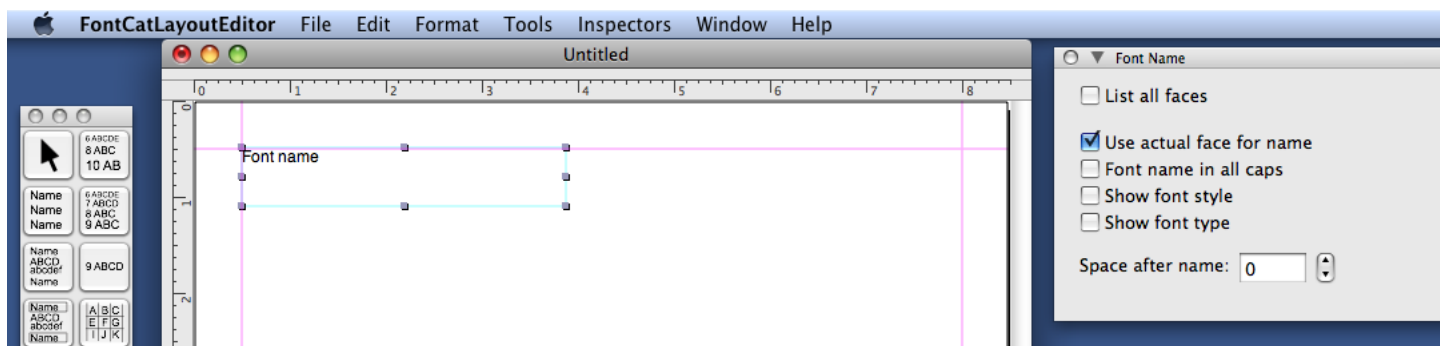


Figure 1-13 Font Name

The Font Name field is a single page field that will list the name of the font that is used to print this page.

You can change the size, color and justification of the font using the Font Name inspector.

Font Name With Alphabet

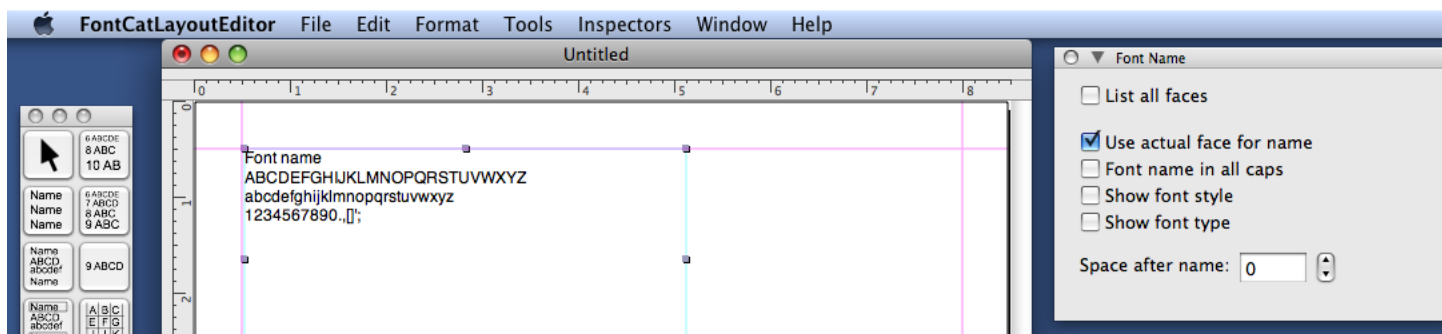


Figure 1-14 Font Name With Alphabet

The Font Name with Alphabet field is a single page field that will list the name of the font and an alphabet section that is used to print this page.

Alphabet

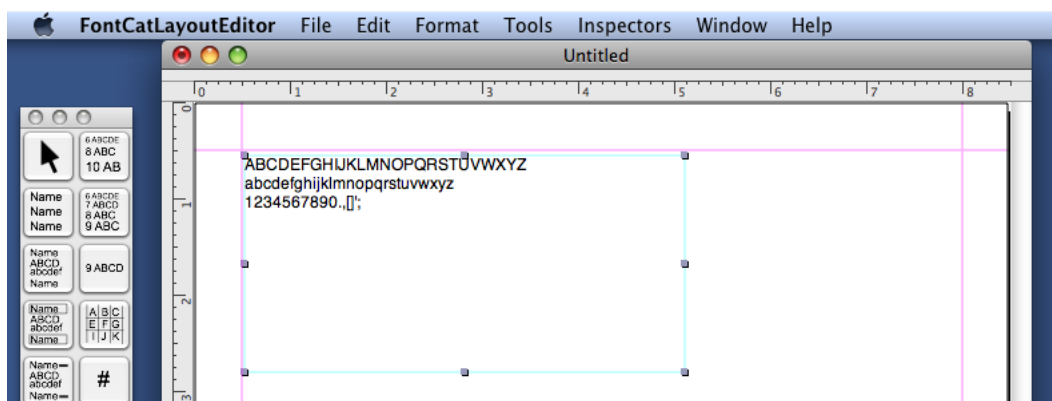


Figure 1-15 Alphabet

The Alphabet field is a single page field that will print the alphabet in the selected font for the page that this field is on.

Alphabet All Characters

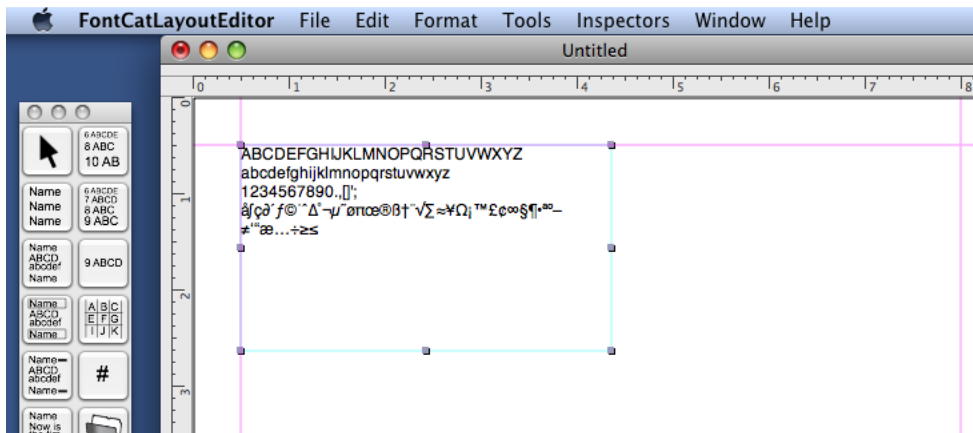


Figure 1-16 Alphabet All Characters

The Alphabet All Characters field is a single page field that will print the alphabet in the selected font for the page that this field is on. This field will list characters accessed by holding down modifier keys as opposed to the alphabet field that lists the main alphabet and punctuation.

Waterfall

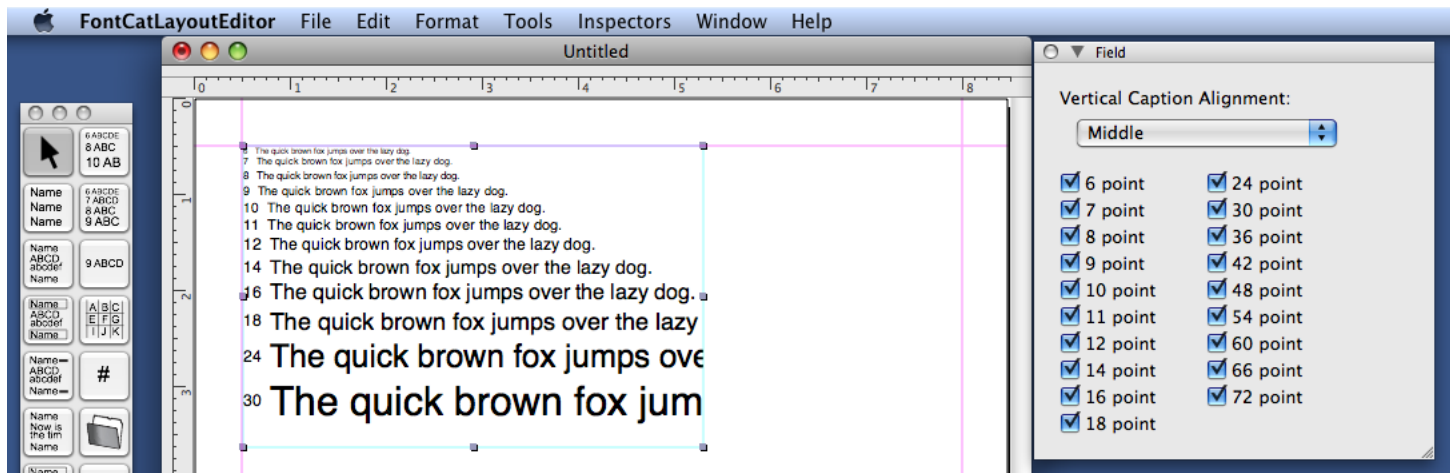


Figure 1-17 Waterfall

The Waterfall field shows a range of type sizes going from small to big

In the field inspector for the waterfall you have the following options:

Vertical Caption Alignment: This controls the placement of the font size placement, top, middle and bottom vertical alignment.

The checkboxes below control the sizes of the text displayed.

Sizes

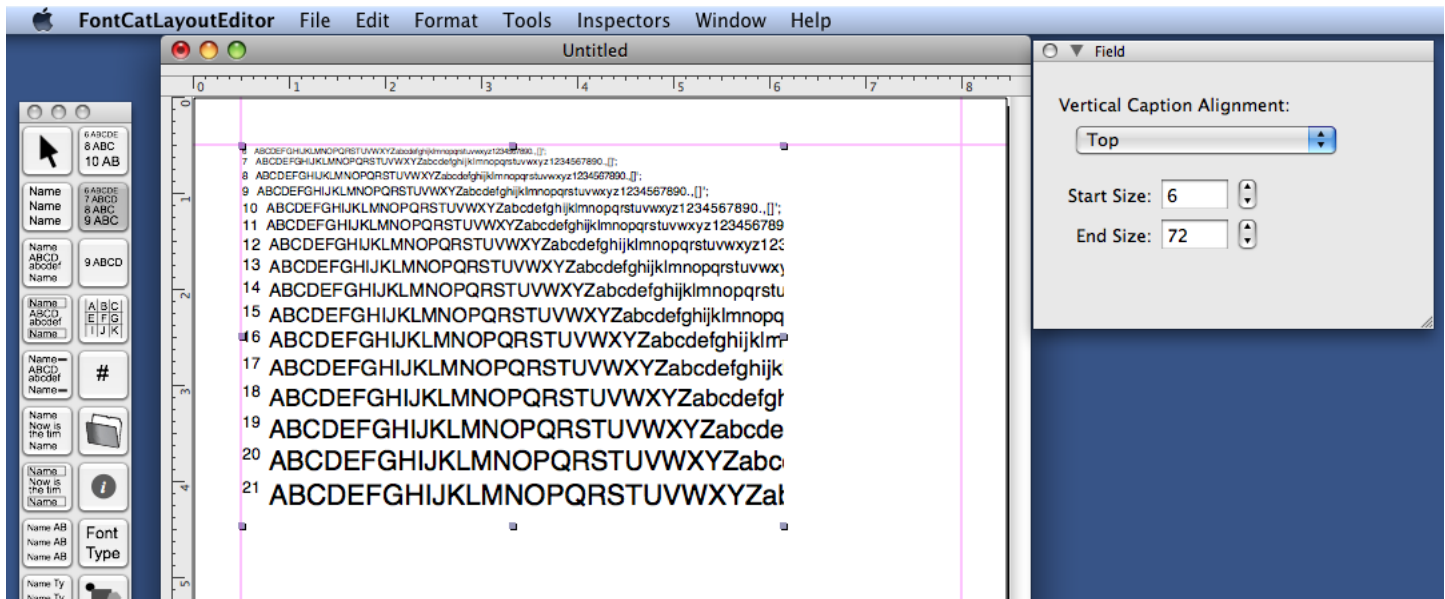


Figure 1-18 Sizes

The Sizes field like the waterfall field shows a range of sizes, however this field lets you choose the starting and stopping size of the fonts displayed.

In the field inspector for the waterfall you have the following options:

Vertical Caption Alignment: This controls the placement of the font size placement, top, middle and bottom vertical alignment.

The *Start Size* field controls the starting size displayed.

The *End Size* field controls the last size displayed.

Font Size and Sample

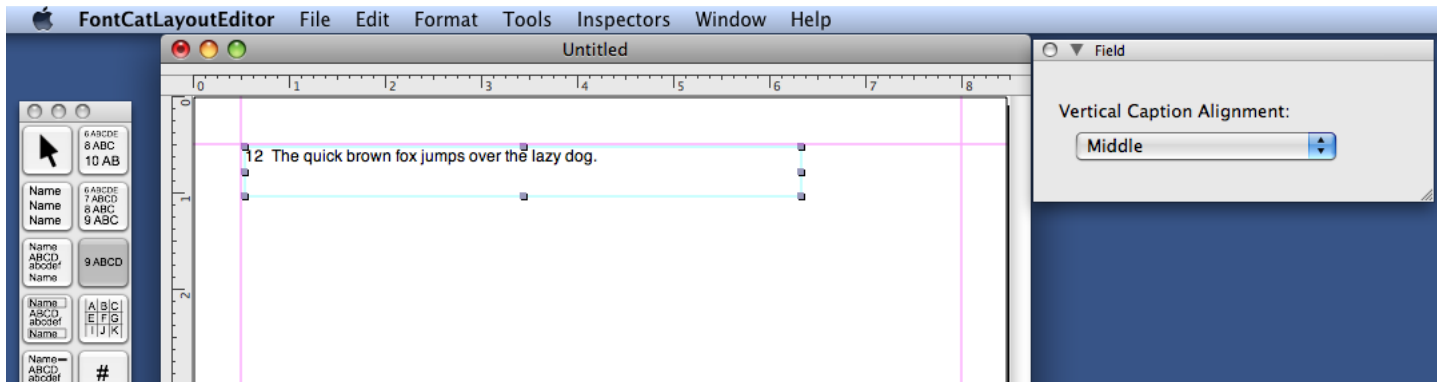


Figure 1-19 Font Size and Sample

The font size and sample field shows a single font size and sample entry. The user can control the size of the font displayed.

The field inspector allows you to set the vertical alignment of the size caption in relation to the font sample.

Grid

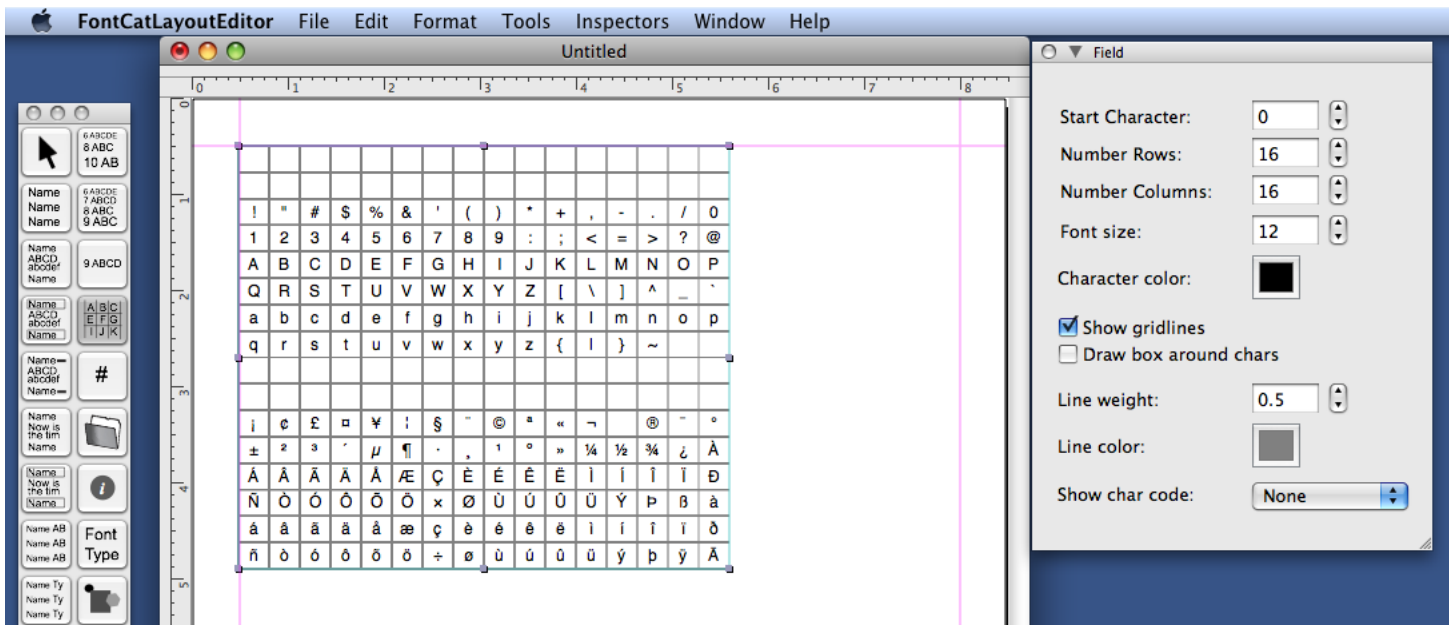


Figure 1-20 Grid

The Grid field shows you a range of characters in a selected font.

As you can see from the screen shot above of the field inspector, you have many options that control the appearance of this field.

Start Character: This is the first character displayed.

Number Rows: The number of rows in the grid.

Number Columns: The number of columns in the grid.

Font size: The size of the character displayed in the grid.

Character color: The color of the character in the grid.

Show gridlines / draw box around chars / line weight / line color - these control the appearance of the grid lines.

Show char code: This controls if and where the character code for that character is displayed in the grid cell.

Page Number

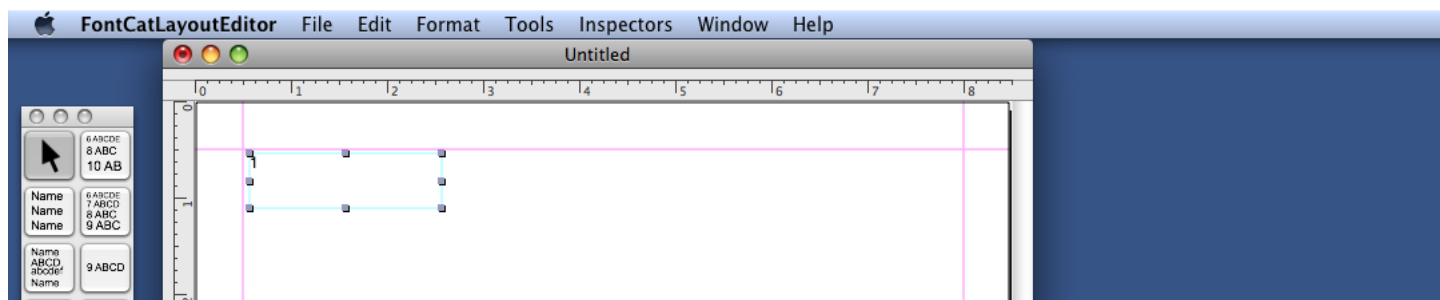


Figure 1-21 Page Number

The page number field will place a page number on each page of the printout. This will print the correct page number for each particular page printed.

Path

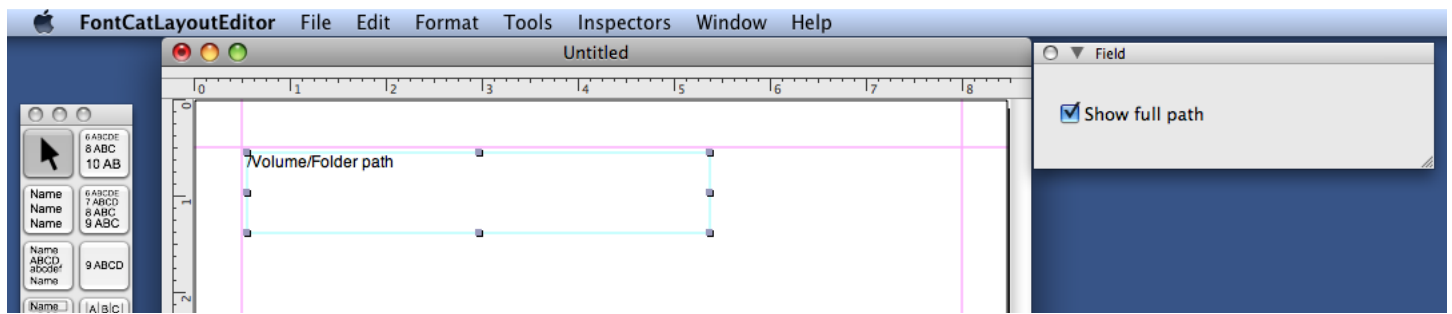


Figure 1-22 Path

The path field shows the folder that the fonts being printed are located in. This will show the root directory, that is the outer set directory.

Show Full path: When this option is checked, then the full path to the folder is displayed and not just the name of the font.

Information

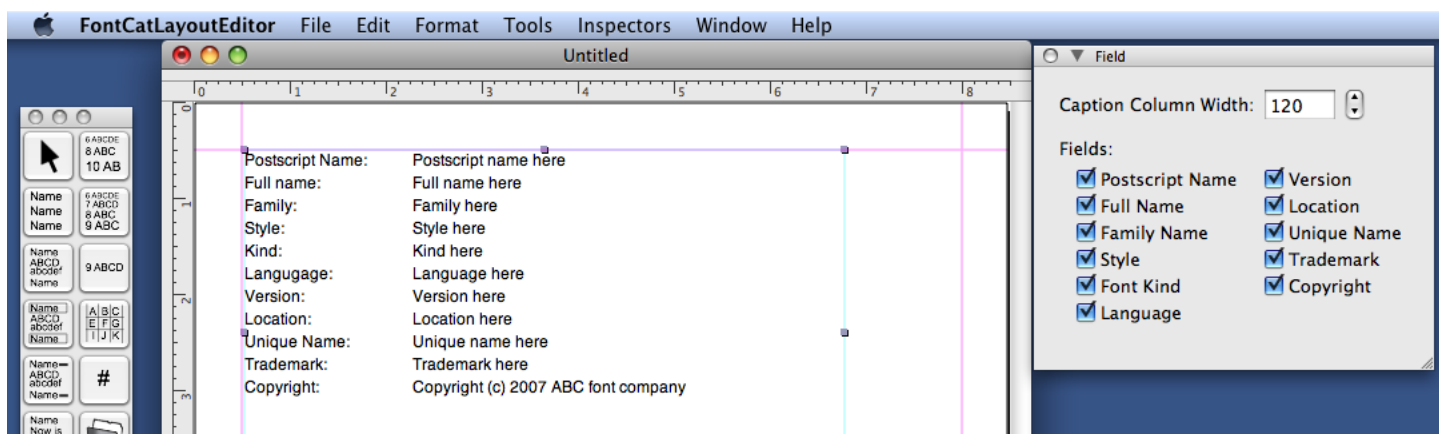


Figure 1-23 Information field.

The information field is used to display information about the currently printing font.

Caption Column Width: This controls the width of the leftmost caption field.

Fields: This allows the selection of which information is displayed.

Font Types

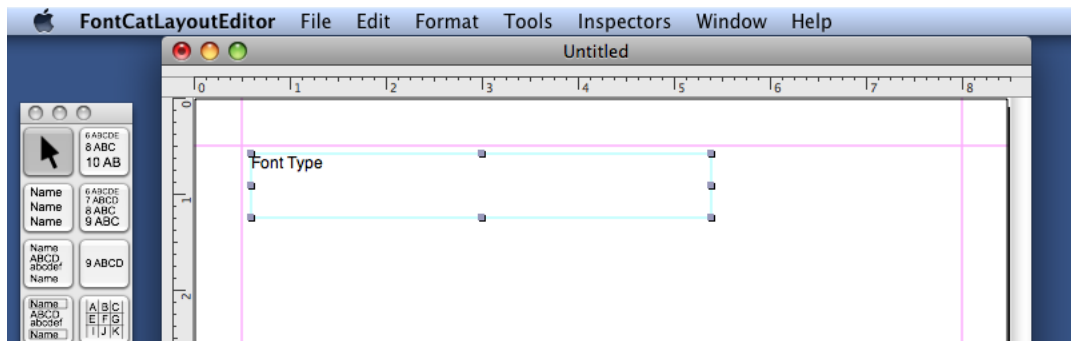


Figure 1-24 Font types

The Font Types field is used to display the type of font being printed. This is a single page field.

Image

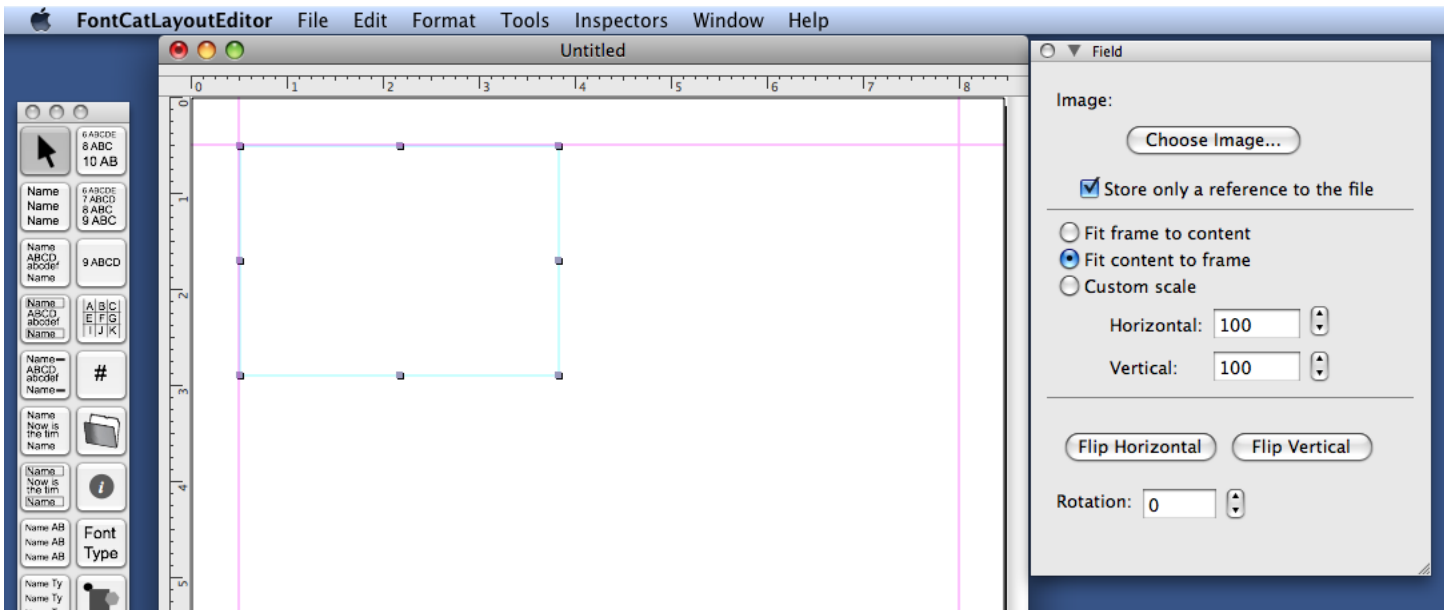


Figure 1-25 Image

The image field is used to display images in a single page layout.

Choose Image... - this will bring up the standard OS file selection dialog for choosing the image file to display.

The next section controls how the image is scaled in the frame, you can fit the frame to the image content, or fit the image content to the frame, or choose a custom scale factor.

The bottom fields allow you to flip the image, or rotate it.

Text

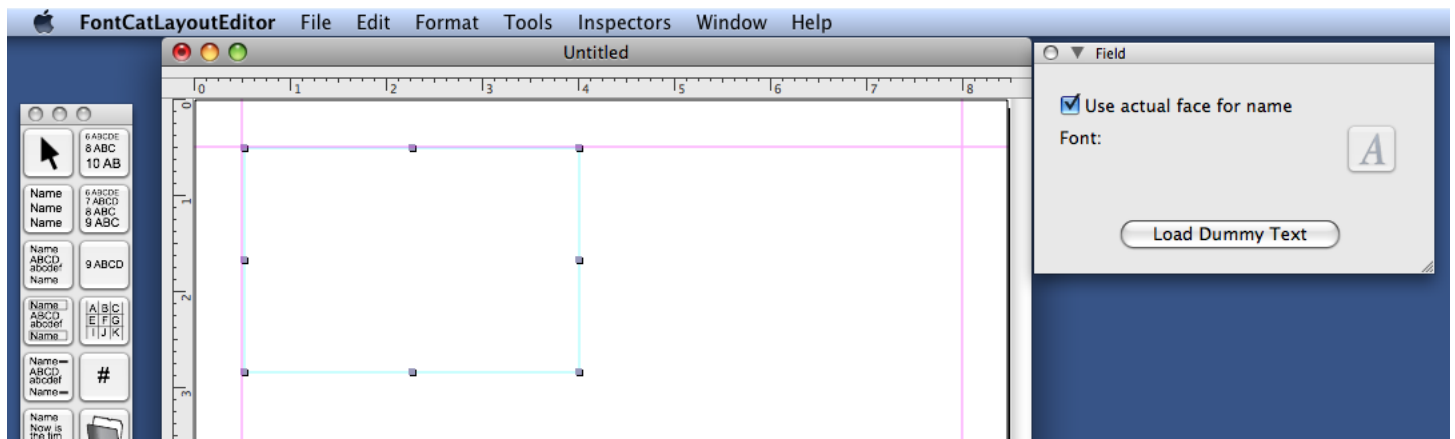


Figure 1-26 Text

The text field can be used to display text in the selected font for the page the layout is printing on, or choose the font to use.

Shapes

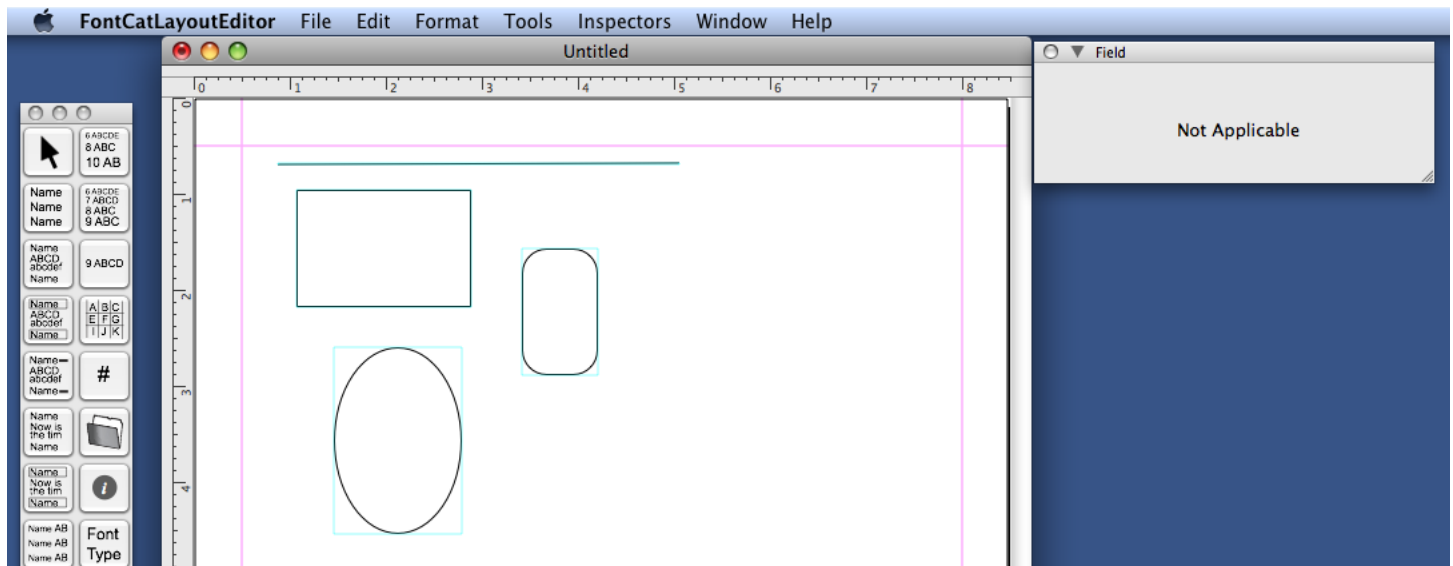


Figure 1-27 Shapes

These fields can be used to add various lines and shapes to a layout. The available shapes are: line, rectangle, round rectangle, oval/circle.