



MainStreetAddressSearch

Documentation

Disclaimer: MainStreetGIS has done its best to make sure that this software functions reliably, however, we cannot guarantee error-free code. By using this tool, you agree not to hold MainStreetGIS liable for any errors resulting from its use. Please employ rigorous quality-control measures.

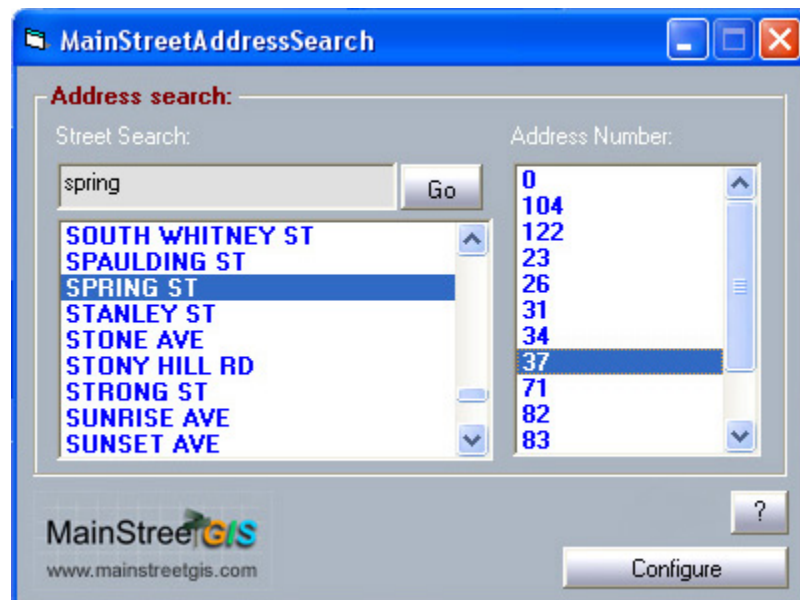
Contents:

- I – Overview
- II – Installation
- III – The Main Tool Window
- IV – The Configuration Window
- V – Quirks

I - Overview:

MainStreetAddressSearch is a FREE plug-in for **ArcGIS™** that loads a list with values from a Street Name field in a Parcel layer. Clicking on a Street Name will load a list of Address Numbers. Clicking on an Address Number will zoom the map to the Parcel at the selected Address.

In the Configuration window, you are asked to select a Parcel Layer, a Street Name field, and an Address Number field from that layer.





II - Installation:

Requirements: Any Windows computer running ArcGIS™ version 9.0 and higher

To add the plug-in to any compatible ArcMap™ project:

- 1 - Launch ArcMap™
- 2 - From the **Tools** menu, select **"Customize"**
- 3 - Click the **Commands** tab
- 4 - At the bottom of the **Commands** window, next to **"Save in"**, you can choose to save the tool to either the current project or to the Normal.mxt file. If you save it to the current project, it will be available the next time the project is loaded. If you save it to the Normal file, it will be available to all projects. Please see ArcMap™ documentation for a description of the Normal file.
- 5 - Click **"Add from file..."** and navigate to the installation folder that contains a **.dll** file.
- 6 - Choose to load the **.dll** file.
- 7 - The tool should now be loaded into the **MainStreetGIS** category, on the left, and the plug-in should be highlighted on the right, in the **Commands** box.
- 8 - Drag and drop the highlighted plug-in text to any toolbar.
- 9 - Click the icon on the toolbar to launch the plug-in.
- 10 - After launching the tool once, the Program Files directory structure for the tool will be created.

Uninstalling the Plug-in:

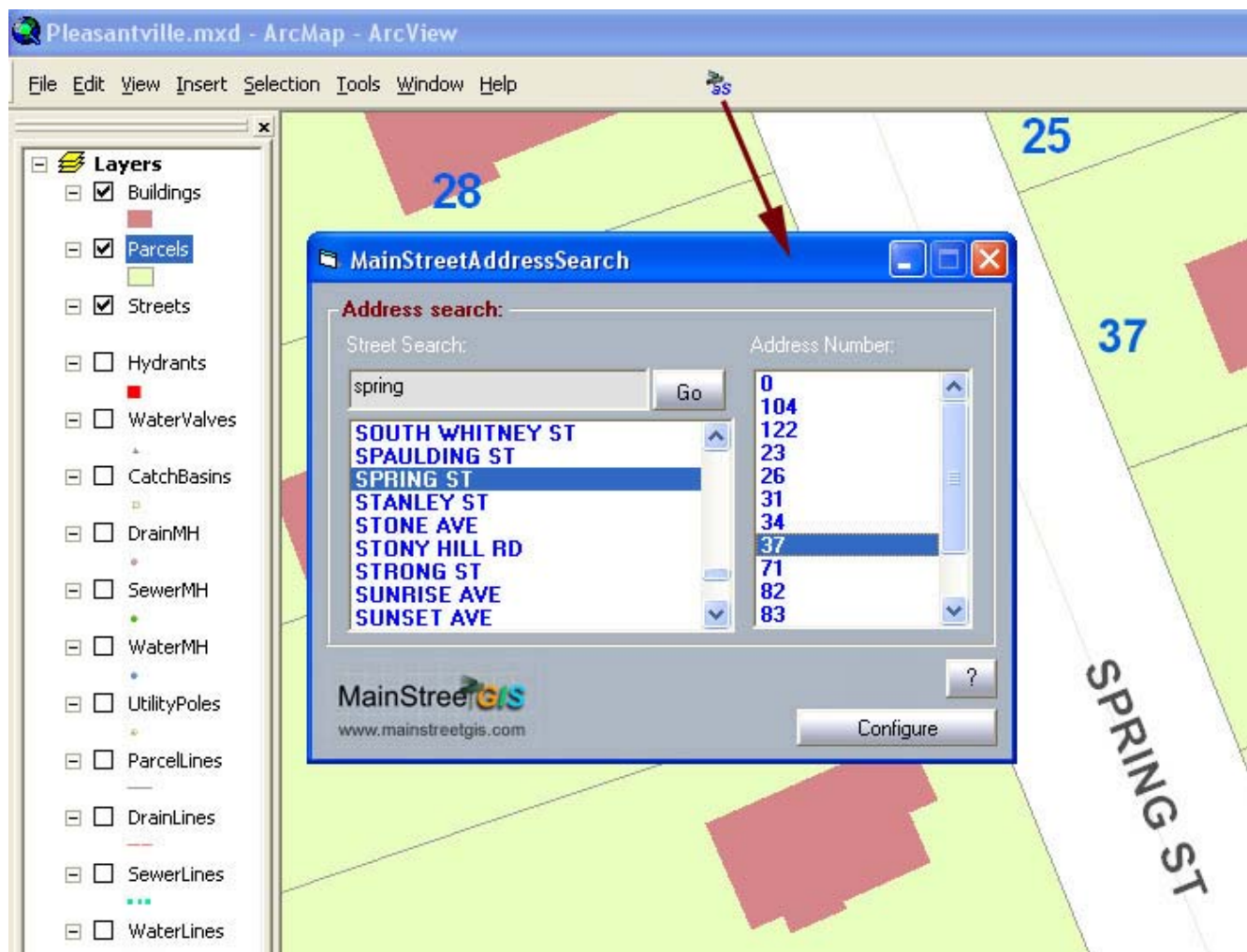
To remove MainStreetAddressSearch from ArcMap, simply delete the MainStreetAddressSearch.dll file with all ArcGIS software closed. Copying it first to another location will create an uninstalled copy that you can archive for use at another time.

III - The Main Tool Window:

To load the tool, click its icon from one of the toolbars. If the tool has not been configured, the Configuration Window will load ([section IV](#)).

Once the tool is configured, a list of Street Names will load. Clicking on a Street Name will load a list of Address Numbers for the street. Clicking on an Address Number will zoom the map to the Parcel at the selected Address.

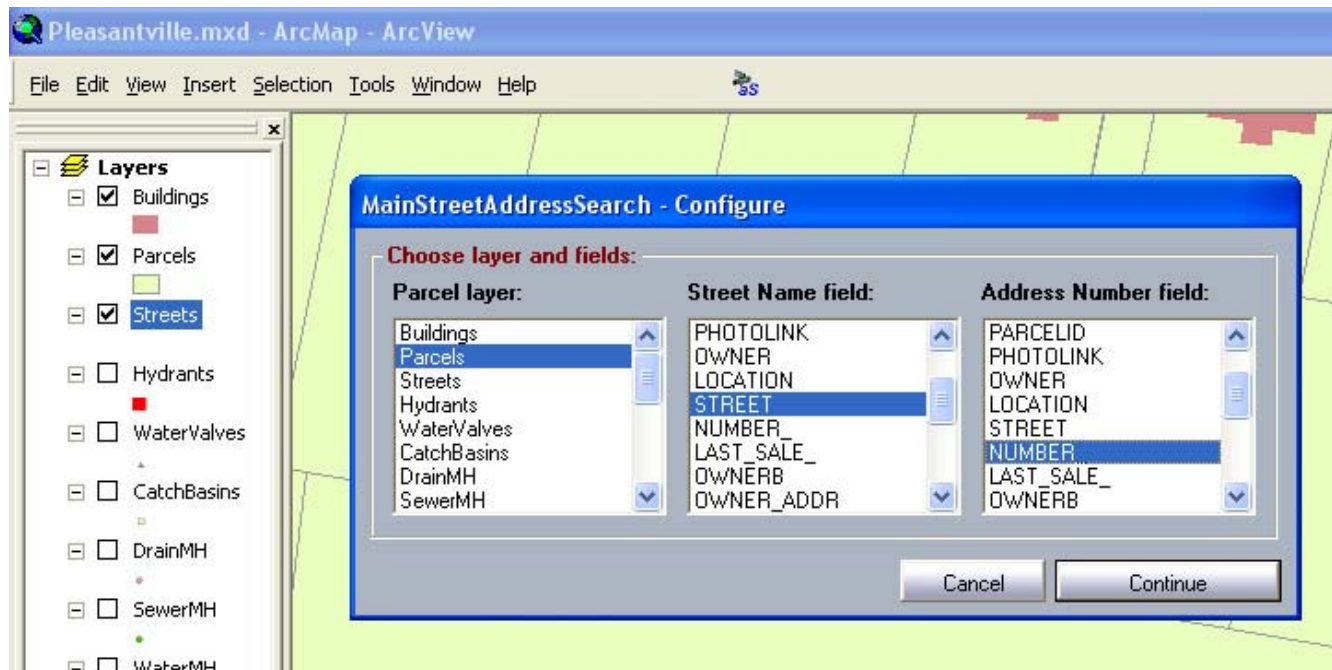
To search for a Street Name in the list, enter text in the Search area. When Go is pressed, the list will be searched and the first item whose left-most characters match the search text will be selected and a list of available Address Numbers will load.



IV – The Configuration Window

When the tool is run for the first time, the Configuration Window will load. To load the Configuration Window again, click Configure on the Main Tool Window.

To configure the tool, select a Parcel layer, a Street Name field, and an Address Number field. Then click Continue.





V – Quirks

Identical Layer Names – If layers exist in your project that have identical names, the tool may not function properly.

Layer Groups – If you experience problems, try removing any Layer Groups in your project, or moving layers from within a Layer Group to the top level in your Table Of Contents.

Read & Write Access To C:\Program Files\MainStreetGIS– This plug-in creates a directory structure within C:\Program Files\MainStreetGIS\ and the user must have read and write access to this directory. On some network systems, the user may not have appropriate permissions to modify the Program Files directory.