

Getting Started with StarDrive

Thank you for choosing StarDrive for your in-dash computing needs. This guide will help you get your StarDrive setup up and running quickly.

1. Set up a user account on your StarDrive computer. For security purposes, it is recommended that you do not use an administrator account.
2. Copy the StarDrive application to the Applications folder (or other desired location) on the StarDrive computer.
3. It is recommended that you add StarDrive to the list of Login Items for the user.
4. Launch StarDrive.
 - 4.1. StarDrive will launch in windowed mode on the initial launch.
5. Copy the StarDrive Utility application to the Applications folder (or other desired location) on the computer with your iTunes library.
6. Launch StarDrive Utility.
7. Double click on the name of your StarDrive computer in the browser list.
8. The management window for your StarDrive will open and prompt you for your password.
 - 8.1. The initial password will be 000000.
9. Switch to the Media tab and click Sync to perform the initial media sync
 - 9.1. It is recommended that you do the initial sync over a wired ethernet connection as it could take an extremely long time over wireless. Subsequent syncs to update data can be done over wireless as there is much less data to transfer.
10. After the initial sync, if you have any protected iTunes music, you will need to authorize the computer to play them.
 - 10.1. In StarDrive, select a protected track in the Media Browser

10.2. A dialog similar to the one below will open, click Open iTunes



10.3. Enter your Apple ID and password in the Authorization dialog and click Authorize.

10.4. Click OK when iTunes tells you that it has authorized the computer, you can now quit iTunes.

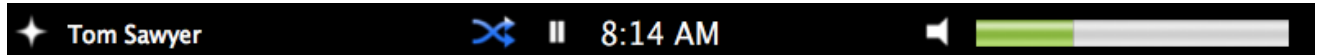
11. You can now go to the Preferences Tab of the StarDrive Utility or the StarDrive System screen and enable Full Screen Mode.








12. For security, it is recommended that you visit the Access Password Tab and set a new Access Password.

13. For any support issues you may have, please visit <http://starchasertechnology.com/support> or send an e-mail to support@starchasertechnology.com.

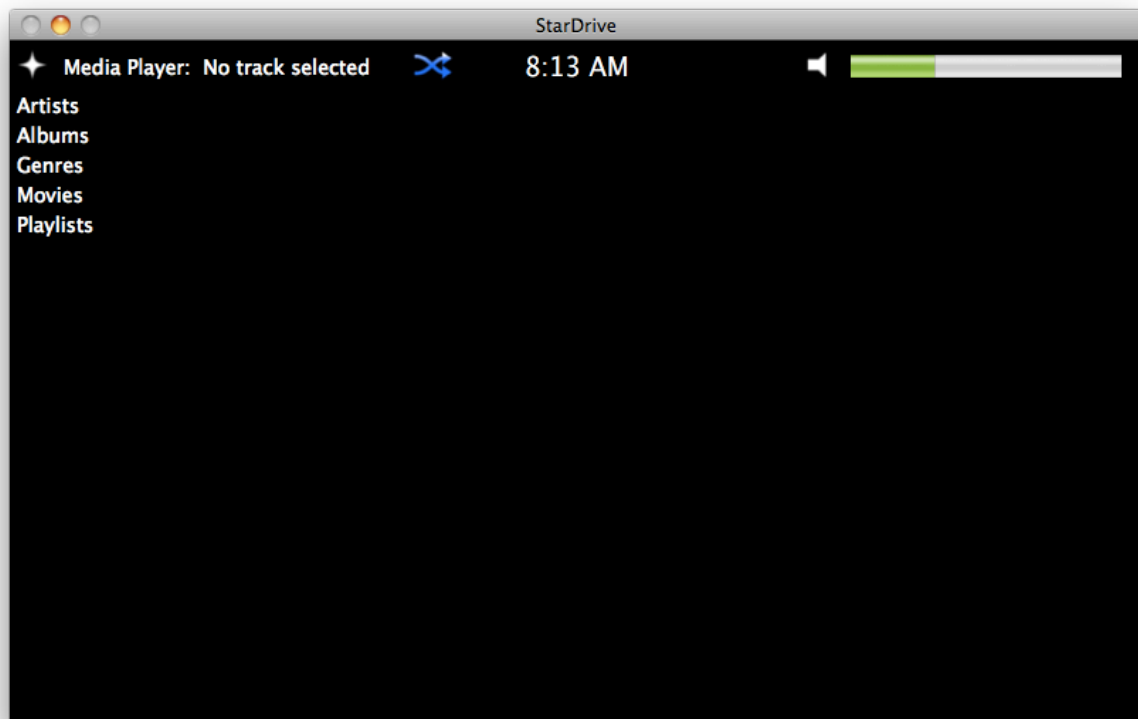
Appendix A - The StarDrive Interface

1. The StarDrive Info Bar is the area at the top of the StarDrive screen and contains always available information and controls.



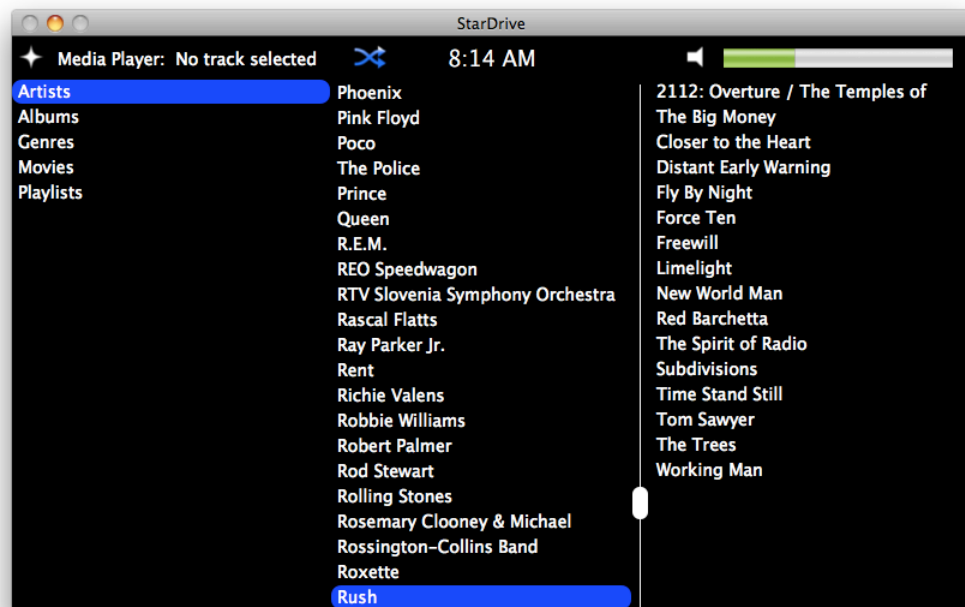
- 1.1.  This is the StarDrive menu button and opens the menu screen.
- 1.2.  This is the current source information indicator, tapping it will take you to the appropriate view for the current source.
- 1.3.  This is the shuffle indicator. The version at the left indicates that shuffle is on, when shuffle is off the icon is white. Tapping the indicator toggles shuffle on and off.
- 1.4.  This is the play/pause button. It is only visible if the media player has a track selected. The button shows a pause symbol if the track is playing and a play symbol if it is paused. Tapping the button toggle the play/pause state of the current track.
- 1.5.  The center of the StarDrive bar displays the current time. The time is formatted according to the short time format defined in the Formats tab of the Language & Text preference pane of System Preferences.
- 1.6.  When an update is available, the Sparkle icon will appear to the right of the time display. Tapping this icon will open the system screen to allow you to view the updates release notes and install the update.
- 1.7.  The mute indicator is on the right side of the bar just to the left of the volume indicator. The mute indicator is white when mute is off and blue when mute is on. Tapping the mute indicator toggles mute on and off.
- 1.8.  At the far right of the StarDrive bar is the volume indicator. Tapping anywhere on the indicator will set the volume to that level. You can also drag within the indicator to adjust the volume. If mute is active, adjusting the volume will disable mute. The indicator color will change to orange when the volume level is at 90% or higher and red when the volume is at maximum.

2. When StarDrive launches, it defaults to the browser screen of the Media Player.



- 2.1. The Media Browser is divided into three columns, Root Lists, Playlists, and Tracks.
 - 2.1.1. Root Lists are the primary categories of the items in your library. If you do not have any items in a category, the root list will not be shown.
 - 2.1.1.1. Artists - A list of audio track playlists for all artists in your library.
 - 2.1.1.2. Albums - A list of audio track playlists for all albums in your library. If an album is titled Greatest Hits, the artist name is automatically prepended to the album name.
 - 2.1.1.3. Genres - A list of audio track playlists for all genres in your library.
 - 2.1.1.4. Podcasts - A list of playlists for each podcast author in your library.

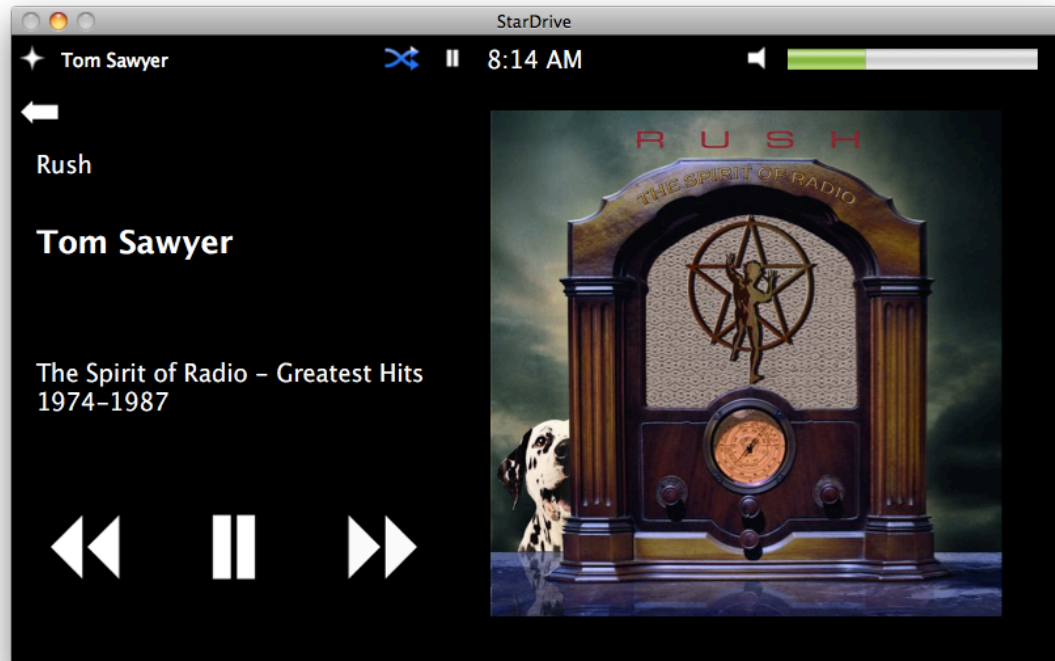
- 2.1.1.5. Audiobooks - A list of playlists for each audiobook author in your library. Please note that only unprotected audiobooks are supported due to digital rights management limitations. Audible audiobooks will not be synchronized to StarDrive.
- 2.1.1.6. Movies - A list of playlists for each movie genre in your library. Please note that only unprotected movies are supported due to digital rights management limitations. iTunes purchased or rental movies will not be synchronized to StarDrive.
- 2.1.1.7. TV Shows - A list of playlists for the TV shows in your library. TV show playlists are divided by season in the format Series Season X, where Series is the Series name and X is the season number. Please note that only unprotected TV Shows are supported due to digital rights management limitations. iTunes purchased episodes will not be synchronized to StarDrive.
- 2.1.1.8. Playlists - A list of all playlists in your library. This includes both smart and standard playlists. Smart playlists will not dynamically update within StarDrive, but play counts and dates are tracked and updated in iTunes upon synchronization so any smart playlists that are based on these values will update upon sync and the updated playlist will be synced back to StarDrive.
- 2.1.2. Playlists hold groups of tracks, these include your own iTunes playlists under the Playlists root list and the dynamically generated playlists included under the other root lists.



2.1.3. Tracks shows a list of the tracks in the currently selected playlist.

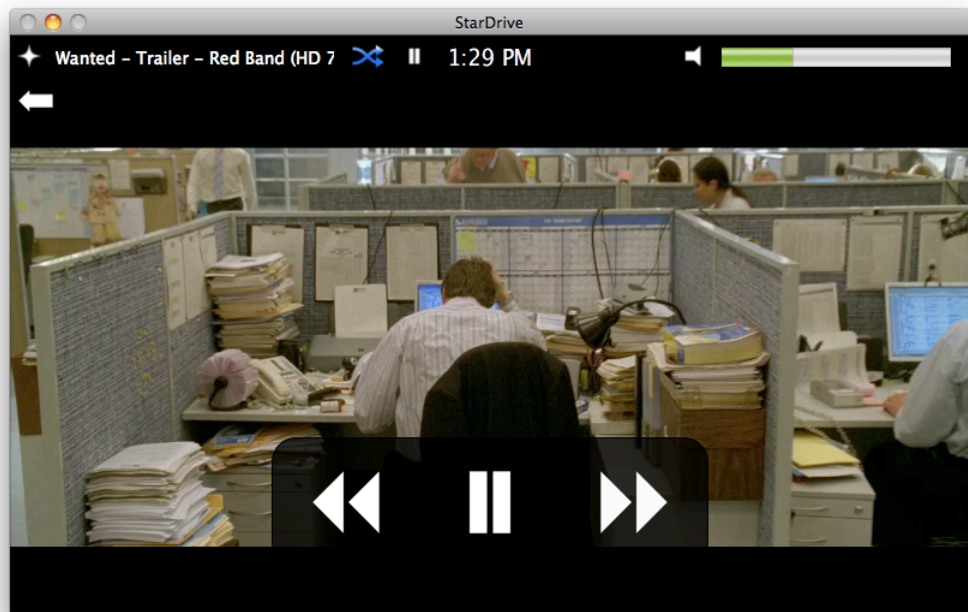
3. After a track has been selected in the Media Browser the Media Player will switch to the media playback view. The media playback view varies based on whether the track being played is audio only or a video track.

3.1. For audio tracks, the playback view shows the album artwork, track information, and playback controls.



3.2. For Video tracks, the playback view shows the video at the maxim size possible while preserving the aspect ratio. Controls are overlaid on the video, but disappear automatically after a few seconds. The control overlay can be brought back by tapping the video.

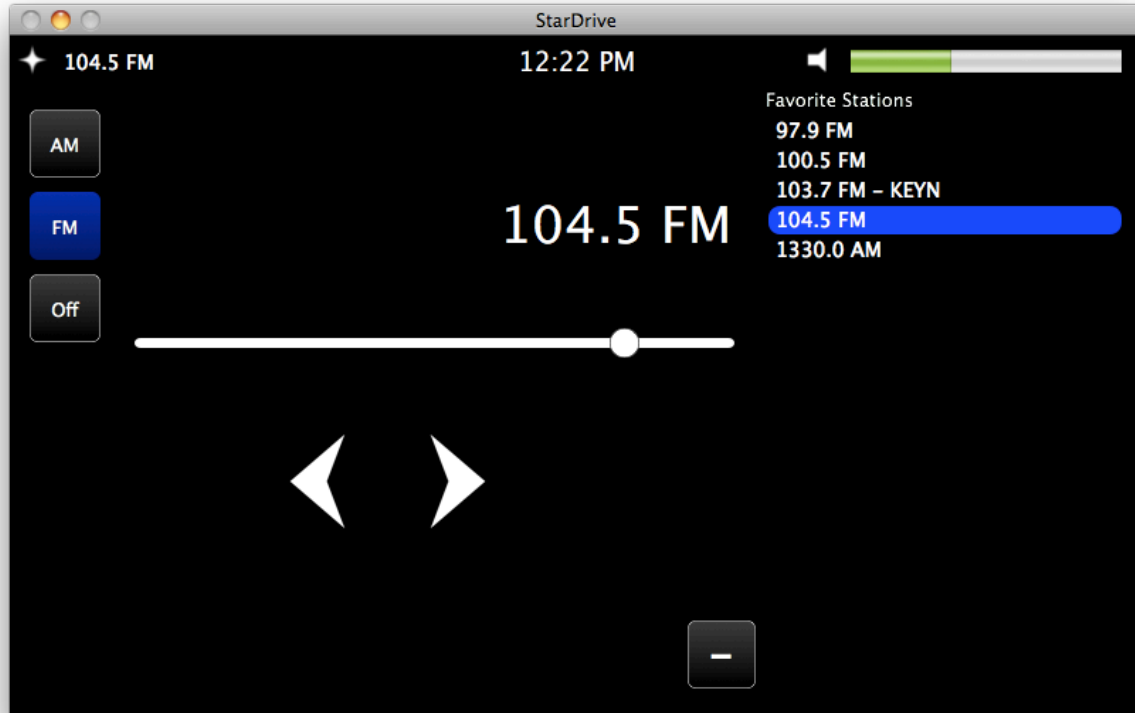
3.2.1. Video player with controls



3.2.2. Video Player without controls

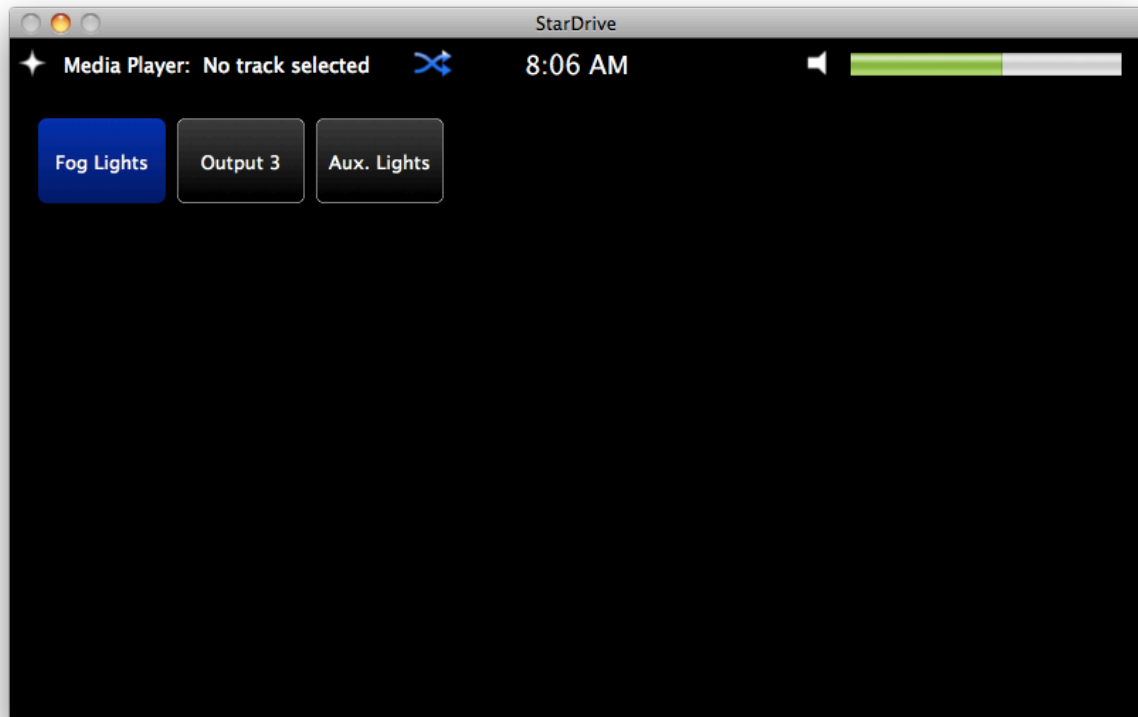


4. The Radio screen allows you to tune in to standard AM and FM radio stations.



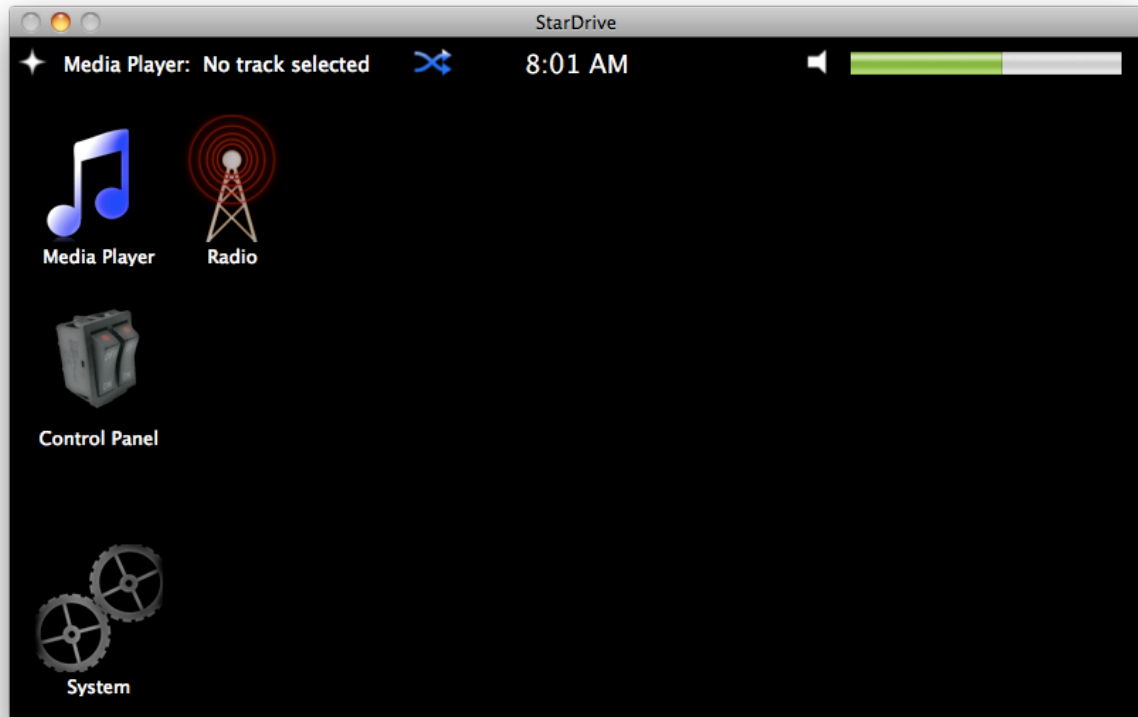
- 4.1. The upper left of the Radio screen shows the band buttons and an off button. The band buttons can be used to switch to the desired band, turning on the radio if necessary. The off button can be used to manually turn off the radio. The button for the selected band (or off) is highlighted in blue.
- 4.2. The current station as well as any assigned favorite name will be displayed in the current source information indicator in the StarDrive Info Bar and above the tuning slider.
- 4.3. The Tuning slider will allow you to tune through the stations of the current band.
- 4.4. The up and down tuning buttons will tune up and down in the set increment for the current band.
- 4.5. The favorite stations are listed to the right of the screen, tapping one will tune to that station.
- 4.6. Just to the left of the favorites list at the bottom of the screen is the add/remove favorite button. If the current station is not a favorite, it will show a + and tapping it will add the station as a favorite. If the current station is a favorite, it will show a - and tapping it will remove the station from the favorites.

5. The Control Panel screen is used to control outputs configured as On/Off or Hold On/Release Off.



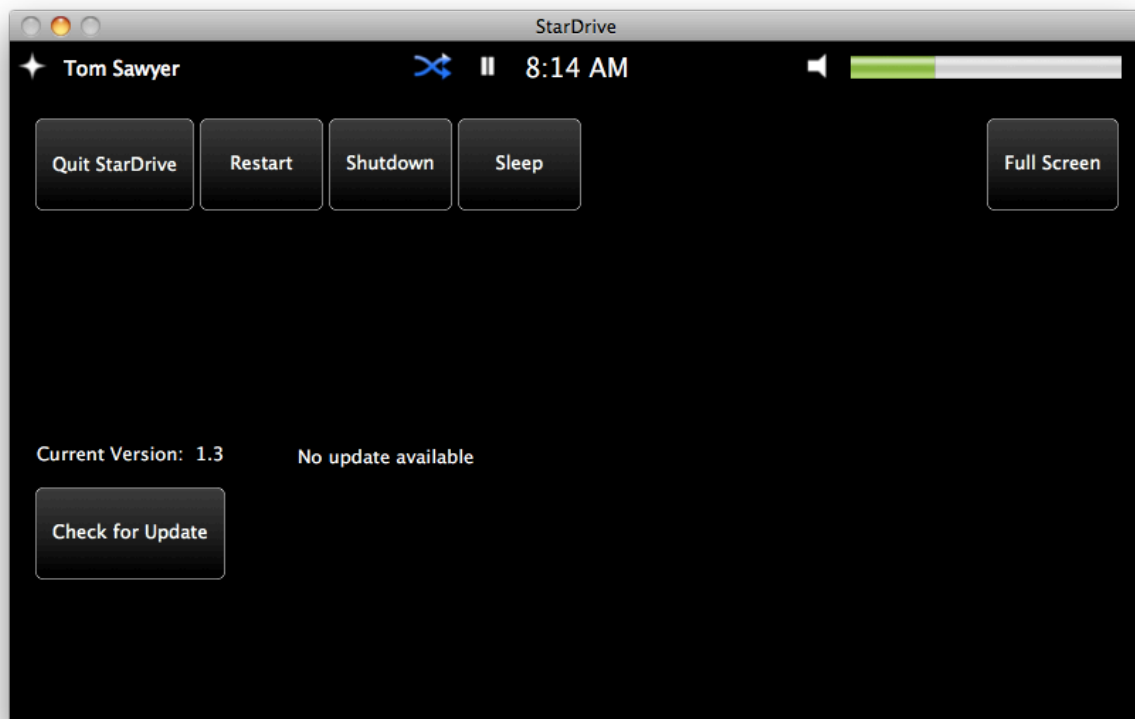
- 5.1. A button is shown for each configured output.
- 5.2. The button is highlighted blue for outputs that are currently on.
- 5.3. If an output is configured as Hold On/Release Off, it is turned on when you press the button and back off once you release it.

6. The Menu screen shows all available functions within StarDrive. Currently these are Media Player, Radio, Control Panel and System. The Radio function will only be displayed if a Griffin Radio SHARK 2 is detected. The Control Panel function will only be displayed if you have controllable outputs configured.



- 6.1. Media Player will take you to the Media Player function. If there is a track selected then it will take you to the media playback view, otherwise to the media browser.
- 6.2. Radio will take you to the radio function.
- 6.3. Control Panel will take you to the output control panel function.
- 6.4. System will take you to the System function.

7. The System function allows you to perform tasks related to the computer and the StarDrive application.



- 7.1. Quit StarDrive - Quit the StarDrive application
- 7.2. Restart - Restart the computer
- 7.3. Shutdown - Shutdown the computer
- 7.4. Sleep - Sleep the computer
- 7.5. Full Screen - This button toggles full screen mode, the button is highlighted blue when in full screen mode.
- 7.6. The bottom of the system screen is devoted to updating the StarDrive application
 - 7.6.1. The left side of this area consists of three items.
 - 7.6.1.1. Display of the current version of the StarDrive application.
 - 7.6.1.2. The Check for Update button to manually check for an update. StarDrive will automatically check for updates every hour when it has an internet connection.

7.6.1.3. When an update is available the Install Update button will appear below the Check for Update button. Clicking Install Update will exit StarDrive from full screen mode and open the update installation dialog.

7.6.2. The right side of the update area consist of two items.

7.6.2.1. Display of the version of the available update, or No Update Available if you are running the latest version.

7.6.2.2. If an update is available, the release notes will display below the version of the update.

8. Digital Inputs using a LabJack U3

8.1. StarDrive 1.3 supports using a LabJack U3 to receive the following input signals for the vehicle.

8.1.1. Ignition state - If you connect a switched power source from your vehicle, such as the accessory wire that would connect to a radio, StarDrive can detect when the vehicle is turned on and off and perform actions such as sleeping the system or pausing and resuming playback. StarDrive 1.3 also sets the system and display to never sleep when the ignition is on and to whatever time you specify when the ignition is off.

8.1.2. Reverse - If you connect a wire that only receives power when the vehicle is in reverse to the LabJack StarDrive can detect when your vehicle is in reverse. This input is currently not used, but will be used in 2.0 to automatically display backup camera video or backup sensor data.

8.1.3. Steering wheel controls - You can connect steering wheel controls or other hardware inputs to the LabJack to provide StarDrive playback control.

8.1.3.1. Play/Pause - Controls Play/Pause control when the Media Player is the active source.

8.1.3.2. Fast Forward/Tune Up - Provides fast forward control for the Media Player and tune up for the Radio.

8.1.3.3. Rewind/Tune Down - Provides rewind control for the Media Player and tune down for the Radio.

8.1.3.4. Volume Up - Increases the volume in 1% increments.

8.1.3.5. Volume Down - Decreases the volume in 1% increments.

8.1.3.6. Mute - Toggles the mute state.

8.2. Note: When connecting 12v automotive wiring to the LabJack, you will need to use a series resistor to decrease the voltage to between 3v to 5v or use a relay (when using a normally open relay you will need to check the inverted signal check box for the input).

8.3. More information about using a LabJack U3 with StarDrive is available at <http://starchasertechnology.com/support>.

9. StarDrive supports the following speakable items commands

9.1. Function Selection Commands

9.1.1. Menu - Brings up the StarDrive menu screen.

9.1.2. Media Player - Activates the Media Player showing the track playing or the the browser if no track is selected.

9.1.3. Radio - Activates the Radio, tuned to the last selected station.

9.1.4. Control Panel - Activates the Control Panel screen.

9.1.5. System - Activates the StarDrive system functions screen.

9.2. Audio Commands

9.2.1. Mute - Mutes the system volume.

9.2.2. Un-mute - Un-mutes the system volume.

9.2.3. Volume Up - Increases the volume by 5%.

9.2.4. Volume Down - Decreases the volume by 5%.

9.3. Media Playback Commands

9.3.1. Pause - Pauses the currently playing track.

9.3.2. Play - Plays the currently paused track.

9.3.3. Next Track - Skips forward to the next track in the current playlist.

9.3.4. Previous Track - Skips backward to the previous track in the current playlist.

9.3.5. Restart Track - Restarts the current track from the beginning.

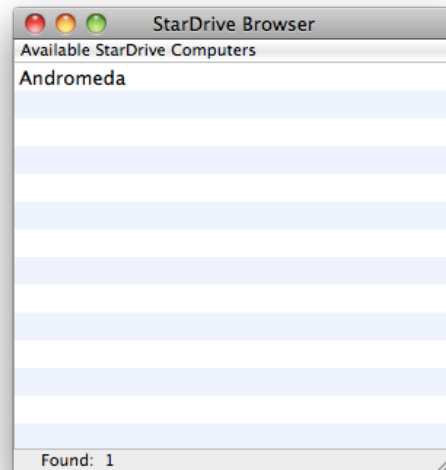
9.3.6. Shuffle On - Turns on the shuffle function.

9.3.7. Shuffle Off - Turns off the shuffle function.

- 9.3.8. Play Artist ArtistName - Starts playing tracks by the artist ArtistName.
- 9.3.8.1. For artists that begin with “The” you can say the artist name with or without the “The” at the beginning.
- 9.3.9. Play Album AlbumName - Starts playing tracks on the album AlbumName.
- 9.3.9.1. For albums that begin with “The” you can say the album name with or without the “The” at the beginning.
- 9.3.10. Play Genre GenreName - Starts playing track in the Genre GenreName.
- 9.3.11. Play Playlist PlaylistName - Starts playing tracks in the playlist PlaylistName.
- 9.4. Radio Commands
 - 9.4.1. Tune to FavoriteStation - Tunes the radio to FavoriteStation. FavoriteStation can either be the station frequency and band or the assigned station name, e.g. "104.5" FM or "The Fox".
- 9.5. Output Commands
 - 9.5.1. OutputName On - Turns the On/Off output with name OutputName On.
 - 9.5.2. OutputName Off - Turns the On/Off output with name OutputName Off.

Appendix B - The StarDrive Utility Interface

1. The first window you will see when you open the StarDrive Utility is the StarDrive Browser window. This window will list all 1.2+ StarDrives on the local network.



1.1. You can open the management window for the StarDrive you want to manage one of three ways.

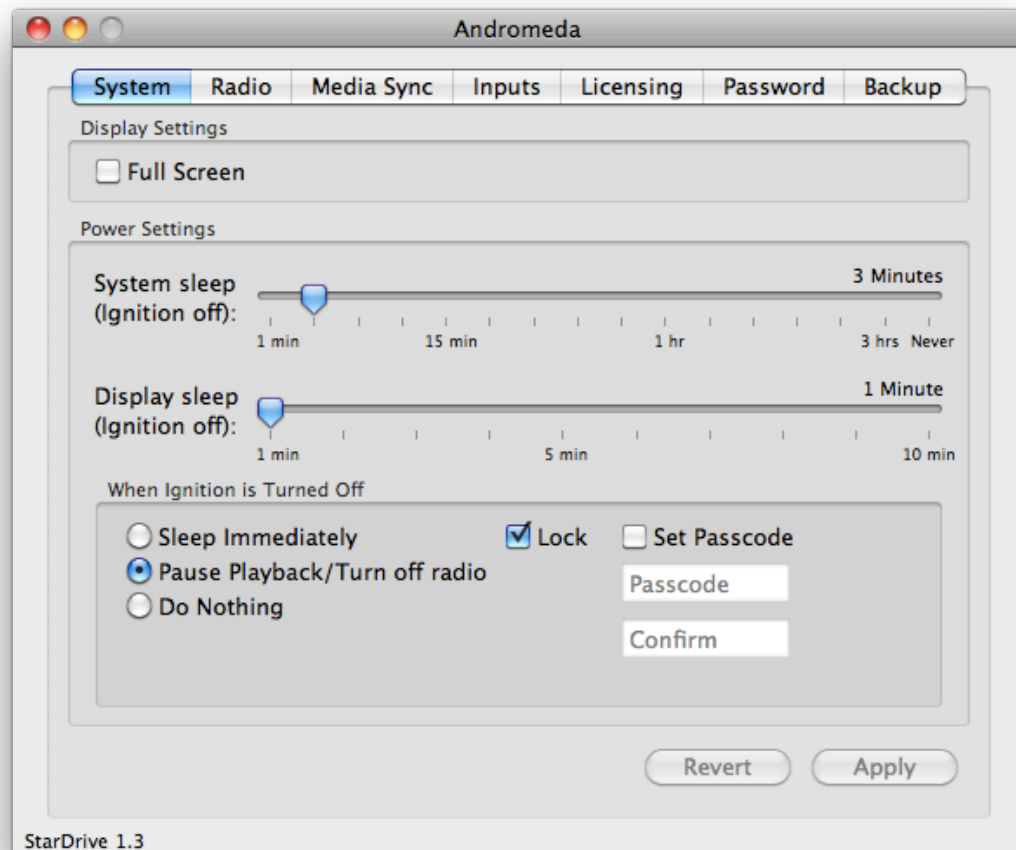
1.1.1. Select the StarDrive name and select Open from the File menu.

1.1.2. Select the StarDrive name and type ⌘O.

1.1.3. Double-click on the StarDrive name.

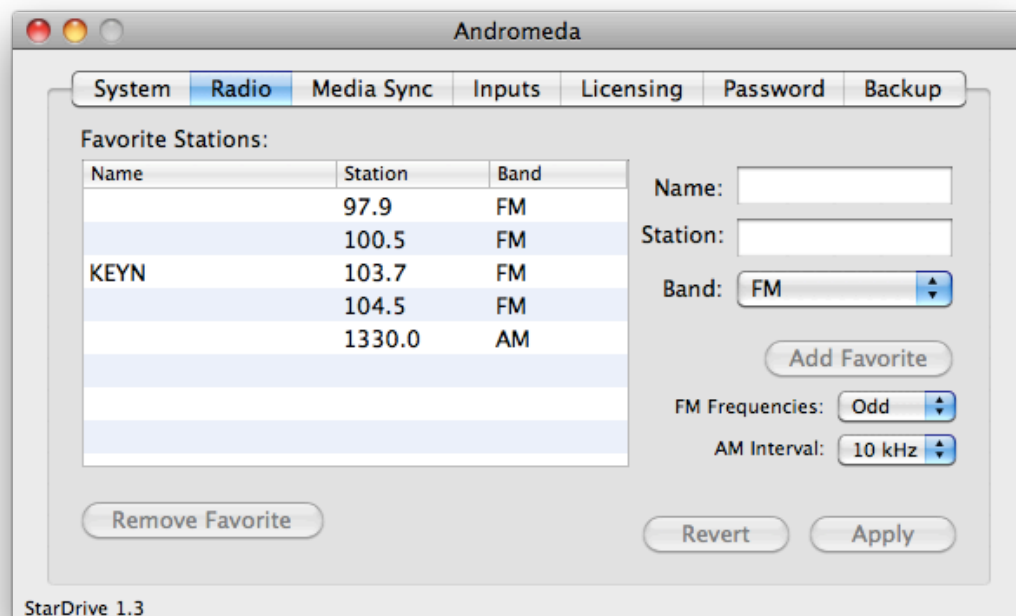
2. The management window consists of 8 tabs: System, Radio, Media Sync, Inputs, Outputs, Licensing, Password, and Backup. The current version of the StarDrive software that you are connected to is shown in the lower left corner of the management window.

2.1. System - Adjust StarDrive preferences.

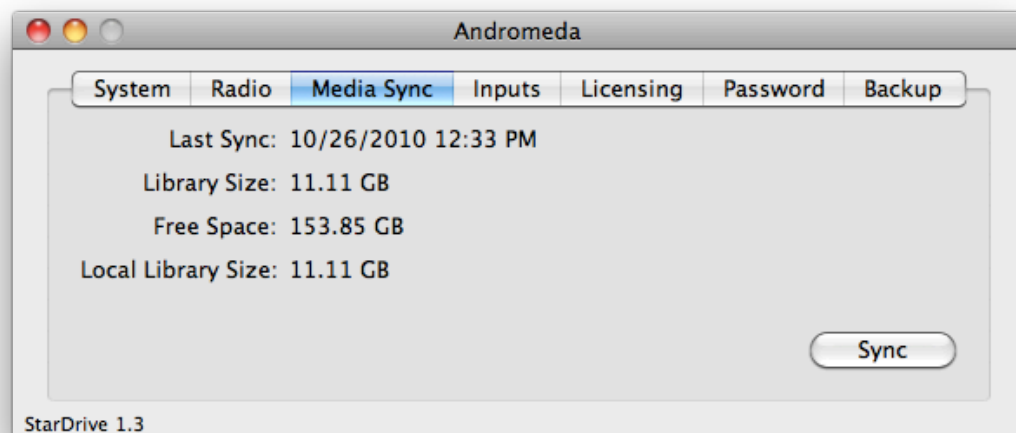


- 2.1.1. Use Full Screen Display - Check to set the StarDrive to use Full Screen mode, uncheck for windowed mode.
- 2.1.2. System sleep (ignition off) - Use this slider to set the inactivity time before StarDrive will put the system to sleep when the ignition is off.
- 2.1.3. Display sleep (ignition off) - Use this slider to set the inactivity time before the display is put to sleep when the ignition is off.
- 2.1.4. When Ignition is Turned Off - The settings within this box are used to control what happens when the ignition is turned off.
 - 2.1.4.1. Sleep Immediately - StarDrive will immediately put the system to sleep when the ignition is turned off.

- 2.1.4.2. Pause Playback/Turn Off Radio - StarDrive will pause the media player or turn off the radio when the ignition is turned off, when the ignition is turned back on StarDrive will play the media player or turn the radio back on.
- 2.1.4.3. Do nothing - StarDrive will perform no special tasks when the ignition state changes.
- 2.1.4.4. Lock - Check this box to lock StarDrive when the ignition is turned off or the computer put to sleep, you will need to set a 6 digit passcode the first time you turn on Lock.
- 2.1.4.5. Set Passcode - Check this box to set a 6 digit passcode to use to unlock StarDrive, if Lock is checked and there is no current passcode, this will be checked and will not be able to be unchecked.
- 2.1.4.6. Passcode and Confirm - When setting the passcode enter your new 6 digit passcode in each of these text boxes.
- 2.1.5. Revert - Revert changes made since the preferences were last loaded or applied.
- 2.1.6. Apply - Apply changes.
- 2.2. Radio - Modify Radio settings and favorites (only available if supported hardware is detected on the StarDrive computer).

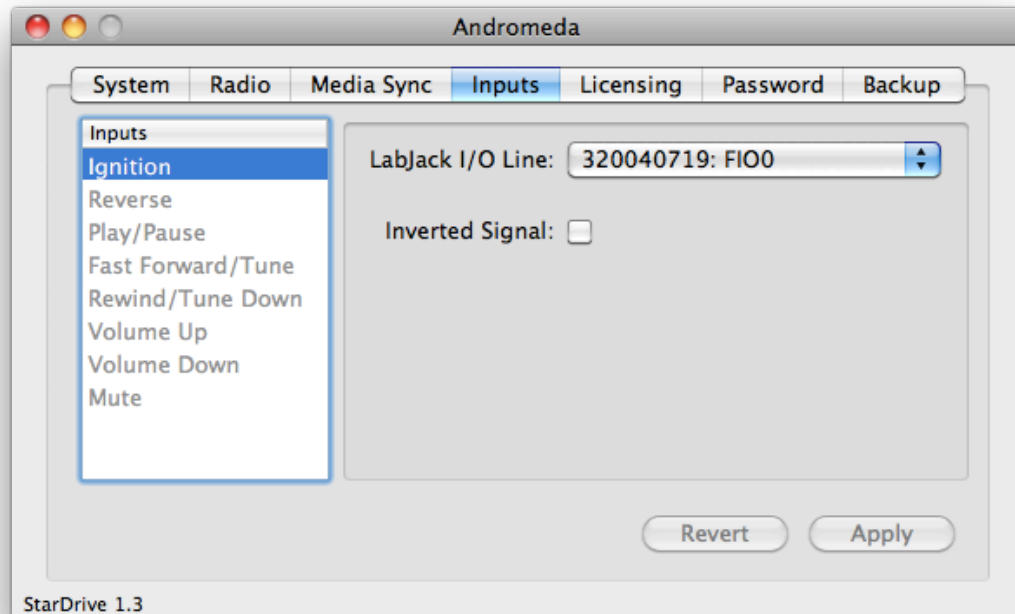


- 2.2.1. Favorite Stations - Lists the current favorites. The name and station can be edited.
- 2.2.2. Remove Favorite - Removes the currently selected favorite.
- 2.2.3. Name - The name of a new favorite station (optional).
- 2.2.4. Station - The frequency of a new favorite station.
- 2.2.5. Band - The band for the new favorite.
- 2.2.6. Add Favorite - Add the new station to the favorites list.
- 2.2.7. FM Frequencies - Set which FM Frequencies to tune; Odd, Even, or All.
- 2.2.8. AM Interval - Set the AM tuning interval; 10 kHz or 9 kHz.
- 2.2.9. Revert - Revert changes made since the radio settings were last loaded or applied.
- 2.2.10. Apply button - Apply the changes.
- 2.3. Media Sync - Synchronize your local iTunes library with your StarDrive library.



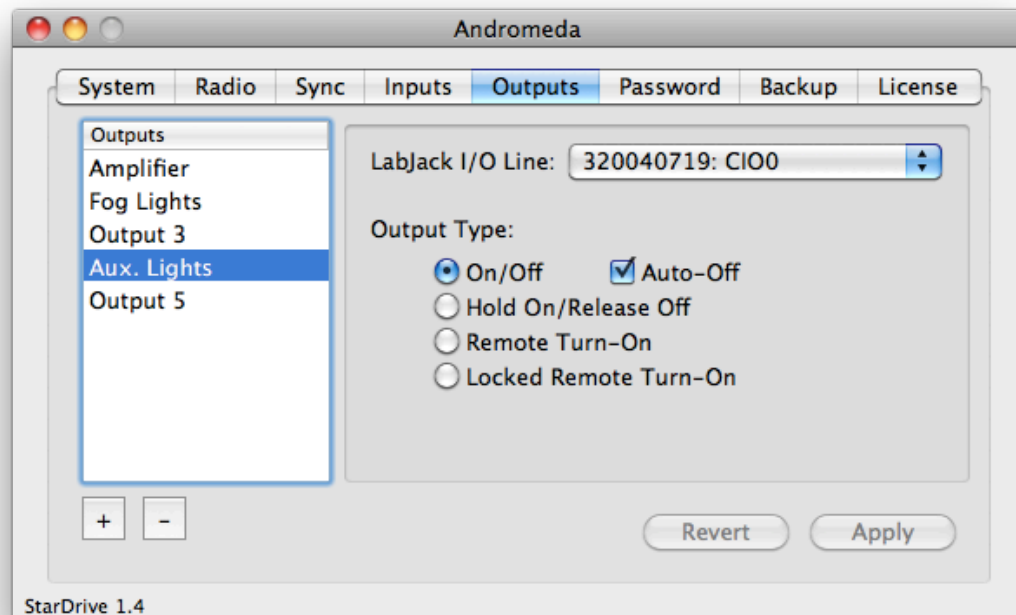
- 2.3.1. Last Sync - Shows the date of the last media synchronization for this StarDrive.
- 2.3.2. Library Size - Shows the current size of the media library on the StarDrive computer.
- 2.3.3. Free Space - Show the current amount of disk space available on the StarDrive computer.

- 2.3.4. Local Library Size - Shows the size of the iTunes library on the local computer excluding unsupported file types.
- 2.3.5. Sync - Performs a media sync between the local iTunes library and the remote StarDrive library.
- 2.4. Inputs - Set up LabJack U3 based digital inputs.



- 2.4.1. Inputs - Lists all of the inputs that can be assigned, inputs that are not currently assigned to a LabJack line are shown dimmed.
- 2.4.2. LabJack I/O Line - This pop-up button is used to assign a LabJack line to the selected input, the button will list None and every un-assigned input capable I/O line on any LabJack U3s detected on the StarDrive computer. The lines are listed in the format of LabJack Serial: Line Name.
- 2.4.3. Inverted Signal - Check this box to use the inverted digital value of the line as the input value. You would check this box when using an open collector or mechanical switch closure such as a normally open relay or basic no voltage mechanical switch steering wheel controls. For driven signals on 12v automotive wiring (connected through a series resistor to drop the voltage to a safe level) you will leave this box unchecked.
- 2.4.4. Revert- Revert any changes made since the inputs were last loaded or applied.
- 2.4.5. Apply- Save the input settings back to the StarDrive.

2.5. Outputs - Set up LabJack U3 based outputs.



2.5.1. Outputs - List of currently configured outputs. The output names are editable.

2.5.2. + - Add a new output.

2.5.3. - - Remove the selected output.

2.5.4. LabJack I/O Line - This pop-up button is used to assign a LabJack line to the selected output, the button will list every un-assigned output capable I/O line on any LabJack U3s detected on the StarDrive computer. The lines are listed in the format of LabJack Serial: Line Name.

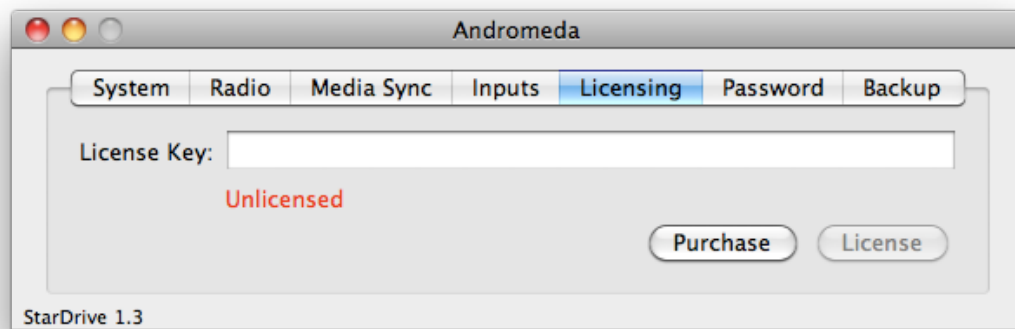
2.5.5. Output Type - Set the type of output

2.5.5.1. On/Off - Controllable output, pressing the Control Panel button toggles the output state.

2.5.5.2. Auto Off - If Checked the output will automatically turn off when the ignition is turned off.

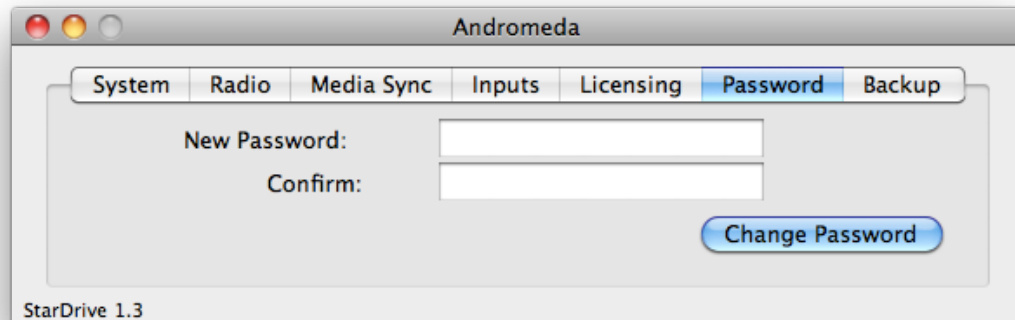
2.5.5.3. Hold On/Release Off - Controllable output, pressing the Control Panel button turns the output on, releasing the button turns it off.

- 2.5.5.4. Remote Turn-On - Automatic output, the output is turned on when StarDrive is launched or wakes from sleep and turned off when quit or goes to sleep.
- 2.5.5.5. Locked Remote Turn-On - Automatic output, the output is turned off when StarDrive is locked and on when unlocked.
- 2.5.6. Revert- Revert any changes made since the outputs were last loaded or applied.
- 2.5.7. Apply- Save the output settings back to the StarDrive.
- 2.5.8. Output Note: The LabJack DACs can control most Solid State Relays and some Mechanical relays, to control almost any Solid State or Mechanical Relay, you will need to use the LJTick-RelayDriver with digital outputs, one of these will give you two digital outputs that can control most relays.
- 2.6. Licensing - Go online to purchase StarDrive or enter a license key to register the software.



- 2.6.1. Purchase - Click to purchase StarDrive online.
- 2.6.2. License Key - Paste the license key you receive in your purchase receipt here.
- 2.6.3. License - Click to validate and save the entered license key.

2.7. Password - Change the password for connecting to this StarDrive.

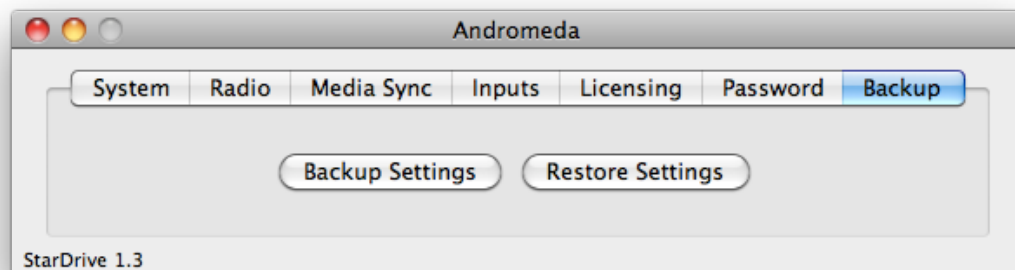


2.7.1. New Password - Enter the new password.

2.7.2. Confirm - Enter the new password again to confirm it.

2.7.3. Change Password - Click to validate that the new and confirm passwords match and to set the new password.

2.8. Backup - Backup or restore StarDrive settings.



2.8.1. Backup Settings - Opens a Save sheet to choose a location and name for saving the backup of the StarDrive Settings. Writes out current setting to the chosen file.

2.8.2. Restore Settings - Opens an Open sheet to choose a StarDrive settings backup file to restore. Reads the chosen file and applies the settings to the StarDrive.